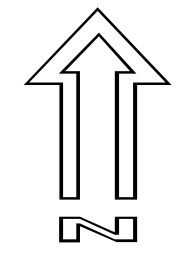


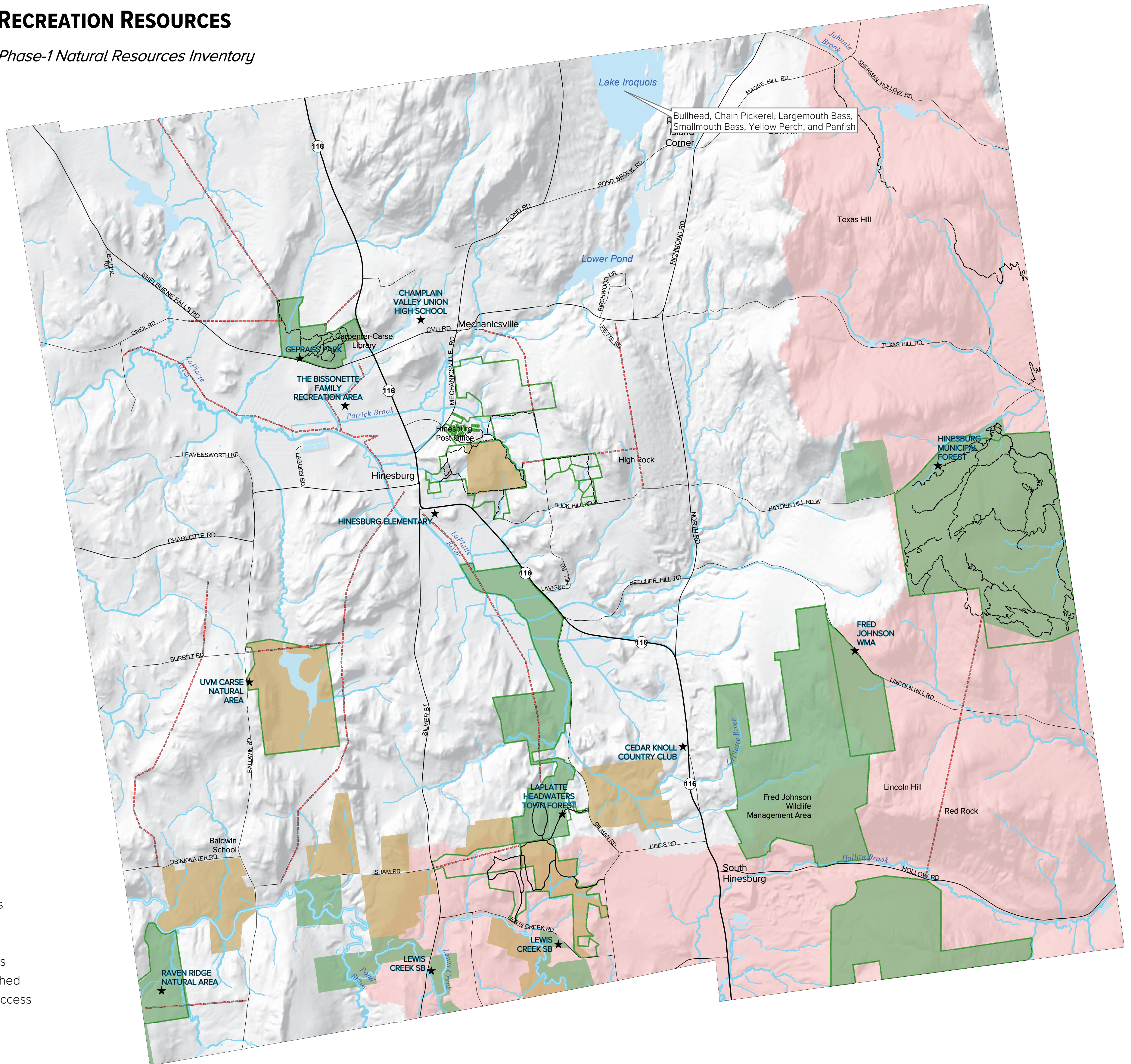


RECREATION RESOURCES

Phase-1 Natural Resources Inventory



1:24,000



- ★ Outdoor Recreation Sites
- HART Recreation Trails
- Priority Trail Gaps
- Property with Public Trails
- Mixed Wild Trout Watershed
- Protected Lands with Public Access
- Limited Public Access
- Public Access

RECREATION DATA LAYERS

Recreation is important to the quality of life for Vermont's citizens and is important to the state's rural economy (Vermont Forests, Parks & Recreation Department, 2013). Fishing, swimming, camping, skiing, hiking, snowmobiling, hunting, and numerous other outdoor pursuits attract residents and tourists to the region. Vermont's outdoor recreation industry supports over 10,000 jobs and outdoor-based tourism accounts for about 11.5 percent of the state's employment (Vermont Forests, Parks & Recreation Department, 2015). Outdoor recreation generally benefits from undeveloped open spaces, clean waterways, and access. Throughout the state, publicly owned lands provide critical access to trails, waterways, and other open spaces. Equally important, many of the state's private landowners also allow public access or passage for recreation.

The following data layers were used and/or developed during the inventory and analysis of recreation resources in town.

Outdoor Recreation Sites

Location of outdoor recreation sites in town. Depicts a wide-range of recreational activities, including but not limited to, boat access/boat ramps, public parks, ski areas, and ballfields. Site locations originally from the *Outdoor Recreation Site GIS* database compiled by Vermont Department of Forests, Parks, and Recreation in 1999. In 2020, site names were then modified by Native Geographic, LLC with feedback from the Hinesburg Conservation Commission and other members of the Phase-1 Inventory Team. Also, erroneous and closed sites were removed.

HART Trails

Hinesburg Area Recreational Trails, including trails of varying user type, size, and condition. The trail locations are primarily derived from GPS, but the dataset includes a variety of data sources of differing age and quality. Compiled by Hinesburg and assembled into a single dataset by Native Geographic, LLC.

For more information visit the *Hinesburg Area Recreation Trails* webpage: <https://www.hinesburg.org/hart.html>.

Properties with Public Trails

Parcels with public recreation trails. Includes trails of various use, difficulty, and maintenance. Using Hinesburg Area Recreational Trails (HART) and other trail data, parcels were identified by Native Geographic, LLC in 2019. Parcel boundaries extracted from the *2018 Hinesburg Parcels GIS Layer*.

Protected Lands with Public Access

Protected lands with public access from the 2018 Vermont Protected Lands Database (VPLD). VPLD is statewide database of parcels that are currently protected from development through public ownership, private ownership, or protection mechanisms such as easements. VPLD is maintained by the VT Center for Geographic Information (VCGI). In 2020, additional protected lands were added or relocated by Native Geographic at the direction of the Hinesburg Conservation Commission, Director of Planning & Zoning, and other members of the Phase-1 Inventory Team.

Parcel boundaries depicted in the database are from a variety of sources, including, but not limited to, surveys, digital tax maps, and photo interpretation.

Public Access: Subset of publicly-owned land and land owned by conservation organizations with open public access.

Limited Public Access: Subset of privately-owned lands with conservation easements that guarantee limited access for recreation. Parcel may provide restricted access for trails, waterways, and dispersed recreation, such as hunting.

No or Unknown Public Access: Protected lands with no guaranteed public access or where the public access is unknown.

Priority Trail Gaps

Areas where the Town would like to create new trail connectivity to help achieve the overall goal of a town-wide trail network. Created by the Hinesburg Director of Planning & Zoning with input from the Trails Committee.

Trout Streams/Rivers

Sub-watersheds with known trout populations. Trout populations and distributions mapped by state fisheries biologists using long-term monitoring data. The trout data uses HUC-14 watersheds to summarize and display distribution. Sub-watershed boundaries are from the USGS.

References

Vermont Fish & Wildlife Department. 2018. Vermont Management Plan for Brook, Brown, and Rainbow Trout. Vermont Fish and Wildlife Department, Montpelier, VT.

Vermont Forests, Parks & Recreation Department. 2013. Vermont Statewide Comprehensive Outdoor Recreation Plan (SCORP): 2014-2018.

Vermont Forests, Parks & Recreation Department. 2015. Vermont Forest Fragmentation Report: Report to the Vermont Legislature, submitted to House and Senate Committees on Natural Resources and Energy and the House Committee on Fish, Wildlife, and Water Resources.



This map is not a survey. Map contains data of varying accuracy and age.

Map produced: 12/21/2020
Map Coordinate System: VT State Plane (NAD 83)