

All reports, drawings, specifications, computer files, field data, notes and other documents and instruments prepared by the Consultant are instruments of service which remain the property of the Consultant. The Consultant shall retain all common law, statutory and other reserved rights, including the copyright therein.

Ownership of Instruments of Service

# HINESBURG FIRE STATION

ROUTE 116 HINESBURG, VERMONT

## 1 STORY - SITE PLAN OPTION 1

DECEMBER 15, 2022



All reports, drawings, specifications, computer files, field data, notes and other documents and instruments prepared by the Consultant are instruments of service and remain the property of the Consultant. The Consultant shall retain all common law, statutory and other reserved rights, including the copyright therein.

### Department Legend

<span style="display: inline-block; width: 20px; height: 10px; background-color: #f4a460; border: 1px solid black;"></span> FD/APPARATUS	<span style="display: inline-block; width: 20px; height: 10px; background-color: #d3d3d3; border: 1px solid black;"></span> SUPPORT
<span style="display: inline-block; width: 20px; height: 10px; background-color: #add8e6; border: 1px solid black;"></span> OFFICE/ADMIN	<span style="display: inline-block; width: 20px; height: 10px; background-color: #e0e0e0; border: 1px solid black;"></span> UTILITY



**1** LEVEL 1  
SD-2 1/16" = 1'-0"

**GENERAL NOTES:**  
BUILDING TOTAL GSF: ±15,200 SF

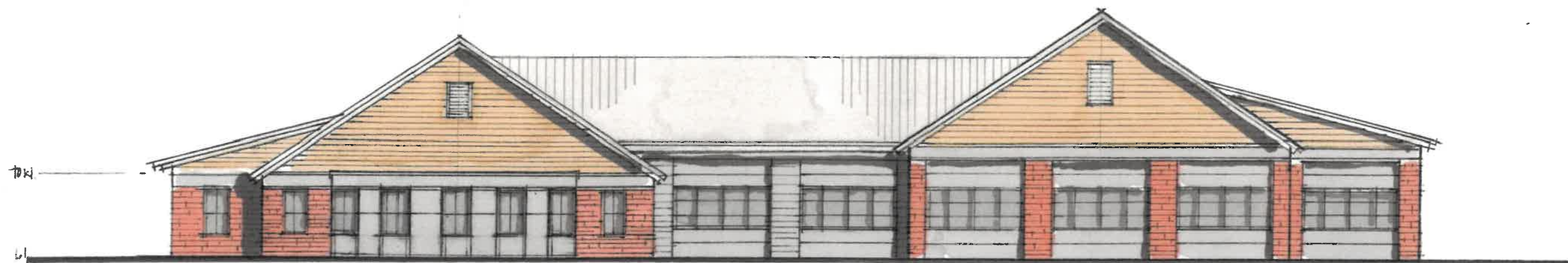
# HINESBURG FIRE STATION

ROUTE 116 HINESBURG, VERMONT

## 1 STORY - REVIEW PLAN

DECEMBER 15, 2022





SOUTH



WEST

All reports, drawings, specifications, computer files, field data, notes and other documents and instruments prepared by the Consultant or instruments of service or all remain the property of the Consultant. The Consultant shall retain all common law, statutory and other reserved rights, including the copyright therein.

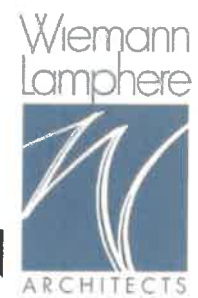
Ownership of Instruments of Service

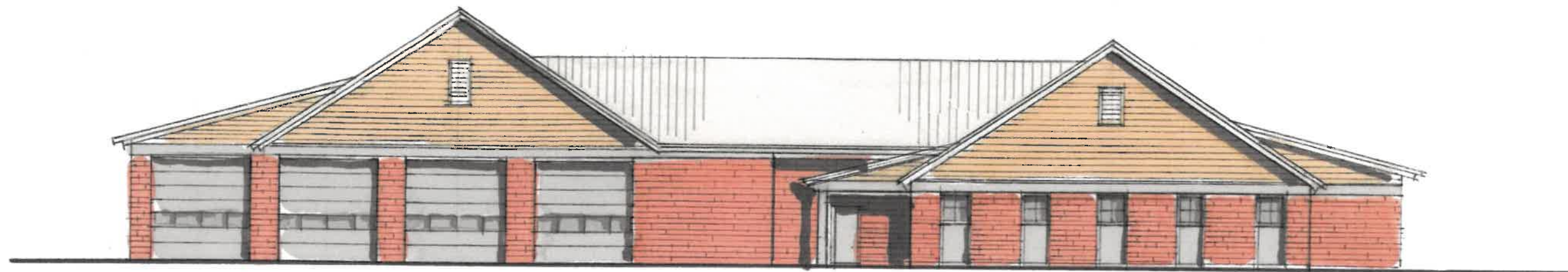
# HINESBURG FIRE STATION

ROUTE 116 HINESBURG, VERMONT

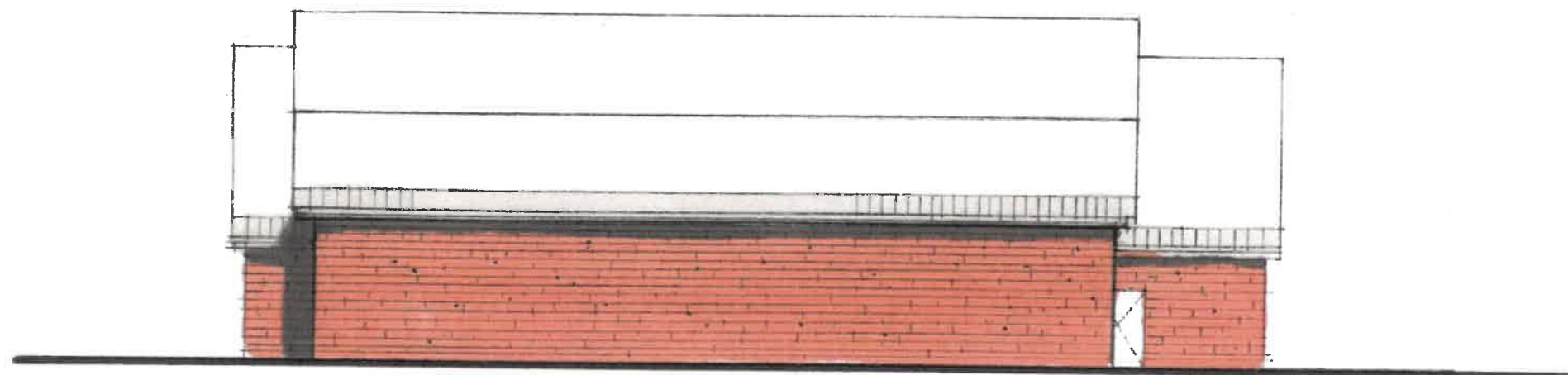
1 STORY ELEVATION

DECEMBER 15, 2022





NORTH



EAST

# HINESBURG FIRE STATION

ROUTE 116 HINESBURG, VERMONT

1 STORY ELEVATION

DECEMBER 15, 2022



All reports, drawings, specifications, computer files, field data, notes and other documents and instruments prepared by the Consultant are instruments of service and shall remain the property of the Consultant. The Consultant shall retain all common law, statutory and other reserved rights, including the copyright therein.



# HINESBURG FIRE STATION

ROUTE 116 HINESBURG, VERMONT

1 - Looking - NW

DECEMBER 15, 2022



All reports, drawings, specifications, computer files, field data, notes and other documents and instruments prepared by the Consultant as instruments of service shall remain the property of the Consultant. The Consultant shall retain all common law, statutory and other reserved rights, including the copyright therein.

Ownership of Instruments of Service



# HINESBURG FIRE STATION

ROUTE 116 HINESBURG, VERMONT

2 - Looking - NE

DECEMBER 15, 2022



All reports, drawings, specifications, computer files, field data, notes and other documents and instruments prepared by the Consultant or its affiliates or services shall remain the property of the Consultant. The Consultant shall retain all common law, statutory and other reserved rights, including the copyright therein.



# HINESBURG FIRE STATION

ROUTE 116 HINESBURG, VERMONT

3 - Looking - SE

DECEMBER 15, 2022



All reports, drawings, specifications, computer files, field data, notes and other documents and instruments prepared by the Consultant as instruments of service shall remain the property of the Consultant. The Consultant shall retain all common law, statutory and other reserved rights, including the copyright therein.

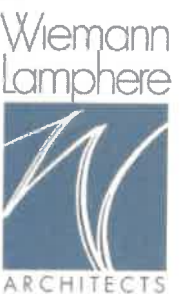


# HINESBURG FIRE STATION

ROUTE 116 HINESBURG, VERMONT

4 - Looking - SW

DECEMBER 15, 2022







## 2 STORY SITE OPTION

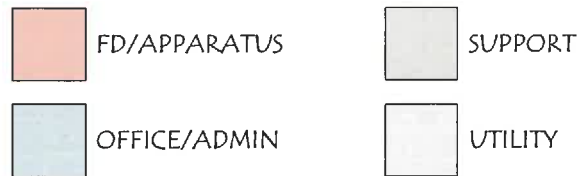
# HINESBURG FIRE STATION

ROUTE 116 HINESBURG, VERMONT

DECEMBER 15, 2022

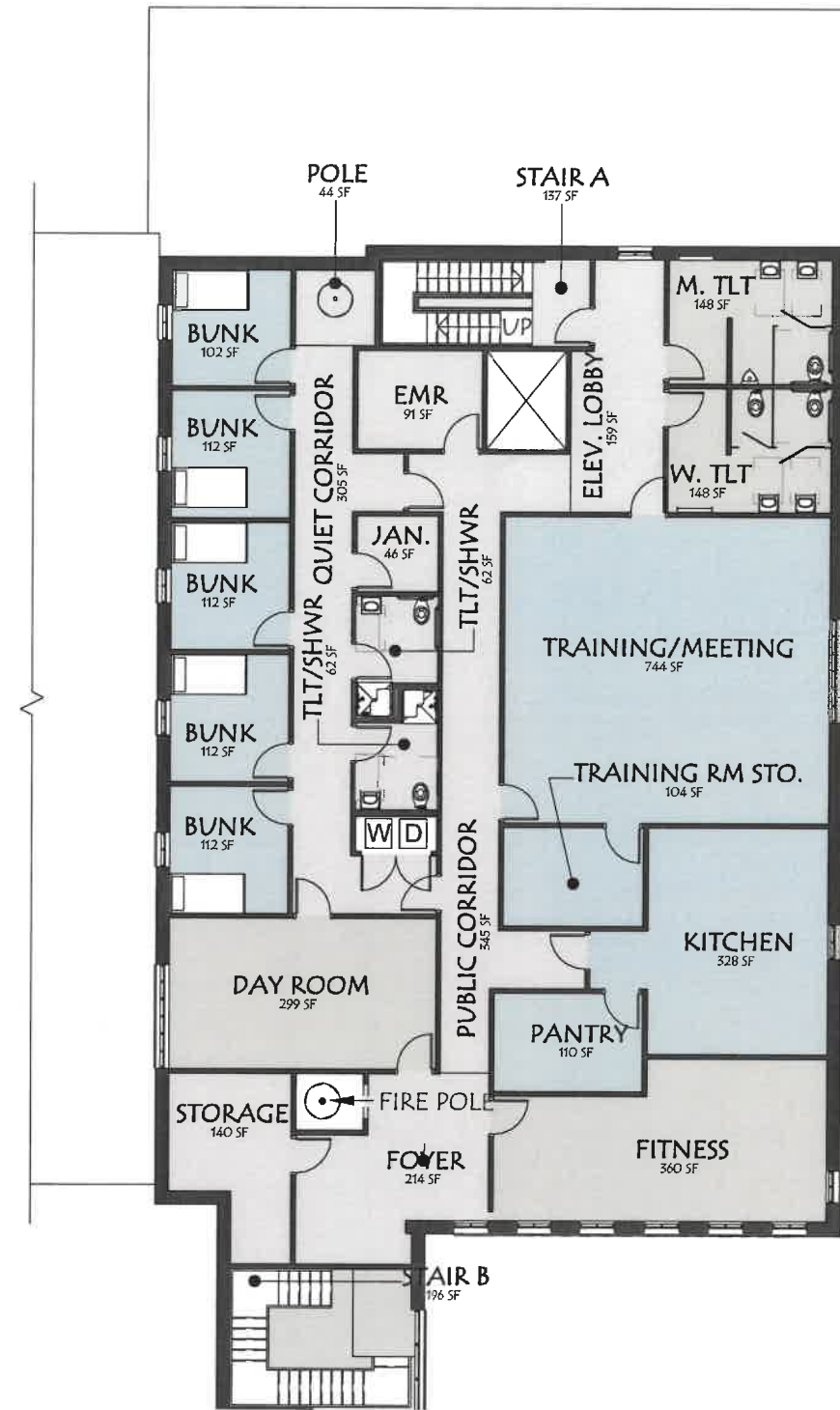
All reports, drawings, specifications, computer files, field data, notes and other documents and instruments prepared by the Consultant or its assistants or service providers remain the property of the Consultant. The Consultant shall retain all common law, statutory and other reserved rights, including the copyright therein.

# Department Legend



## GENERAL NOTES:

- LEVEL 1 GSF: ±11,925
- LEVEL 2 GSF: ±5,265
- BUILDING TOTAL GSF: ±17,190



1 LEVEL 1  
SD-2 1/16" = 1'-0"

2 LEVEL 2  
SD-2 1/16" = 1'-0"

# HINESBURG FIRE STATION

ROUTE 116 HINESBURG, VERMONT

2 STORY - REVIEW PLAN

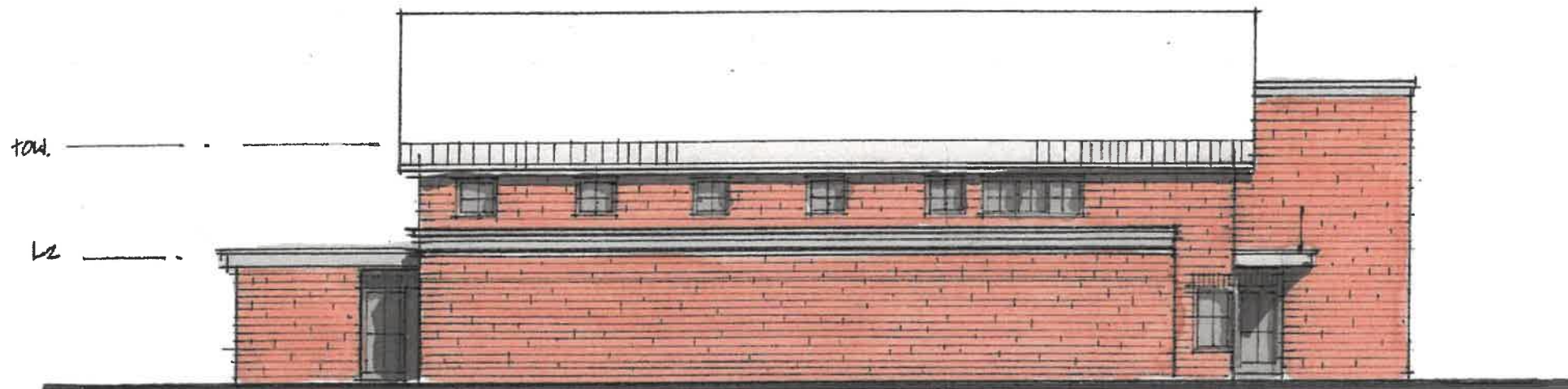
DECEMBER 15, 2022



All reports, drawings, specifications, computer files, field data, notes and other documents and instruments prepared by the Consultant or instruments of service shall remain the property of the Consultant. The Consultant shall retain all common law, statutory and other reserved rights, including the copyright therein.



EAST



SOUTH

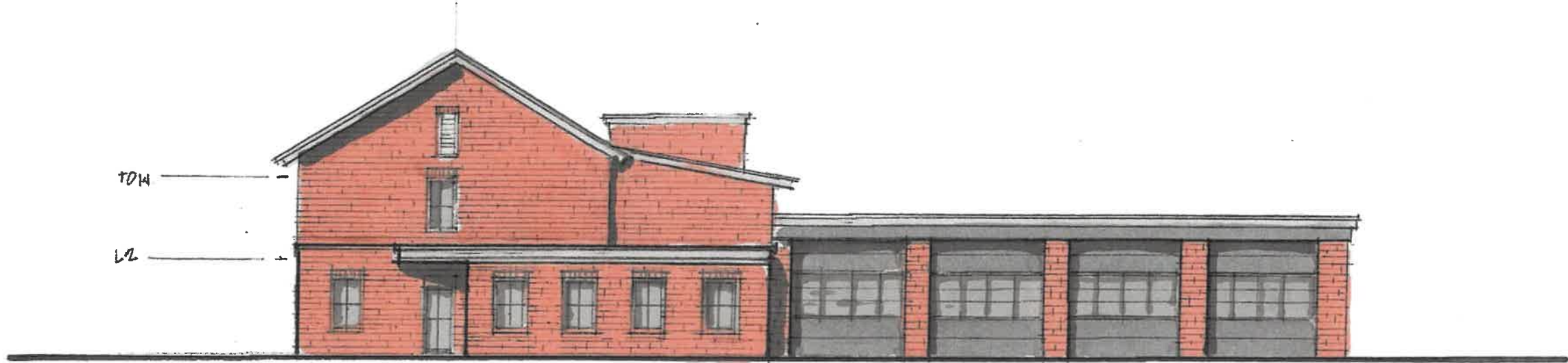
# HINESBURG FIRE STATION

ROUTE 116 HINESBURG, VERMONT

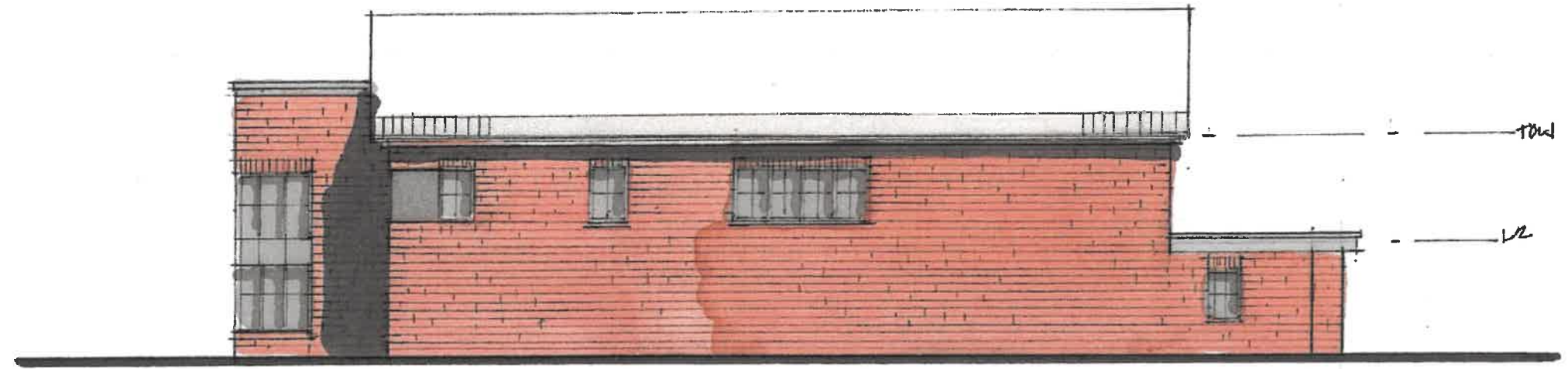
2 STORY - ELEVATION

DECEMBER 15, 2022





WEST



NORTH

# HINESBURG FIRE STATION

ROUTE 116 HINESBURG, VERMONT

2 STORY - ELEVATION

DECEMBER 15, 2022



All reports, drawings, specifications, computer files, field data, notes and other documents and instruments prepared by the Consultant or instruments of service shall remain the property of the Consultant. The Consultant shall retain all common law, statutory and other reserved rights, including the copyright therein.

All reports, drawings, specifications, computer files, field data, notes and other documents and instruments prepared by the Consultant as instruments of service shall remain the property of the Consultant. The Consultant shall retain all common law, statutory and other reserved rights, including the copyright therein.



# HINESBURG FIRE STATION

ROUTE 116 HINESBURG, VERMONT

1 - 116 Looking SW

DECEMBER 15, 2022




All reports, drawings, specifications, computer files, field data, notes and other documents and instruments prepared by the Consultant are instruments of service and remain the property of the Consultant. The Consultant shall retain all common law, statutory and other reserved rights, including the copyright therein.



# HINESBURG FIRE STATION

ROUTE 116 HINESBURG, VERMONT

2 - 116 Looking NW



Wiemann  
Lamphere  
ARCHITECTS

DECEMBER 15, 2022

All reports, drawings, specifications, computer files, field data, notes and other documents and instruments prepared by the Consultant or instruments of service shall remain the property of the Consultant. The Consultant shall retain all common law, statutory and other reserved rights, including the copyright therein.



# HINESBURG FIRE STATION

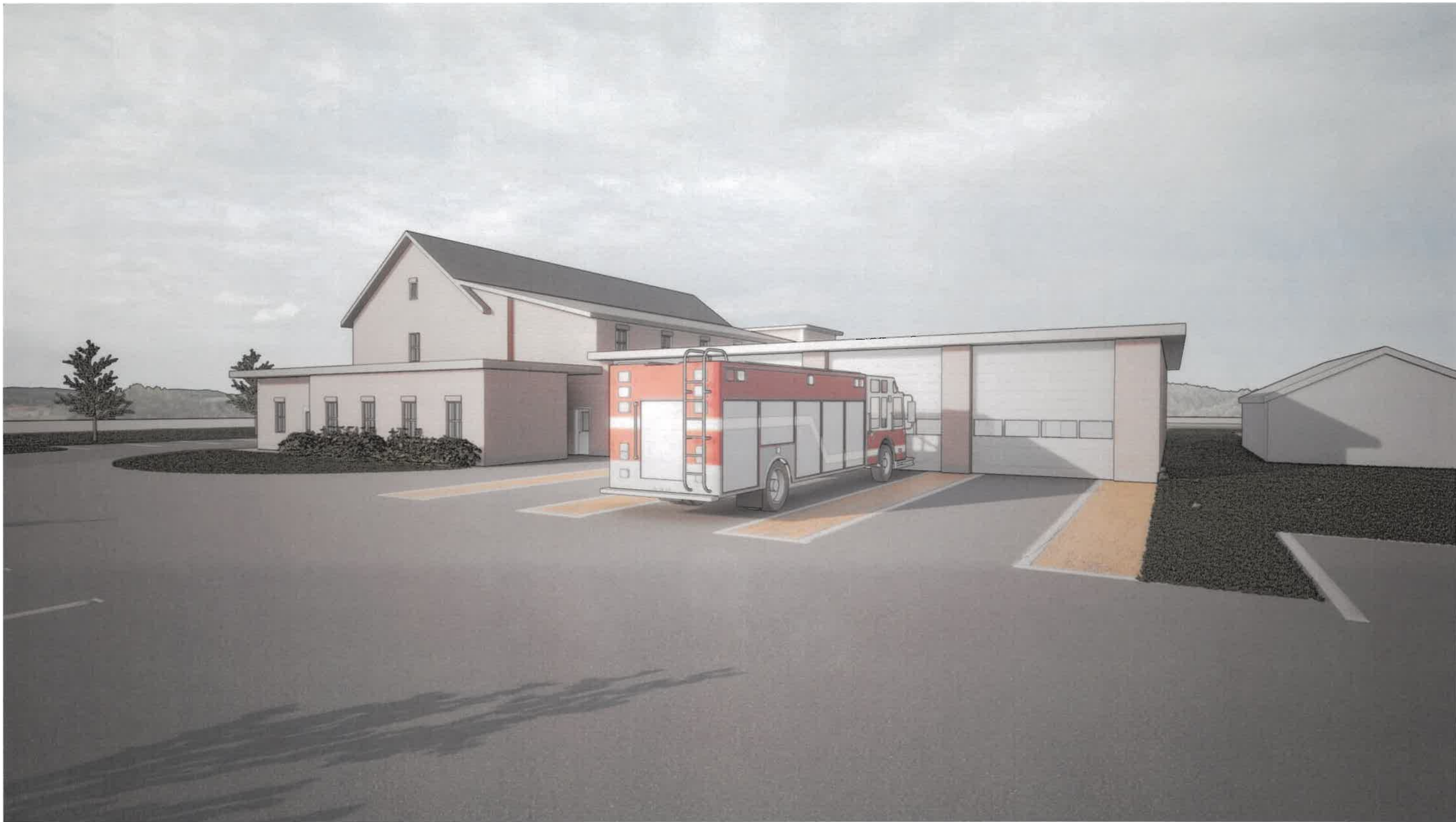
ROUTE 116 HINESBURG, VERMONT

3 - Farmall Dr. Looking E

DECEMBER 15, 2022



All reports, drawings, specifications, computer files, field data, notes and other documents and instruments prepared by the Consultant or instruments of service shall remain the property of the Consultant. The Consultant shall retain all common law, statutory and other reserved rights, including the copyright therein.

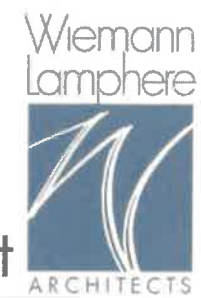


# HINESBURG FIRE STATION

ROUTE 116 HINESBURG, VERMONT

4 - Rear Parking Lot

DECEMBER 15, 2022







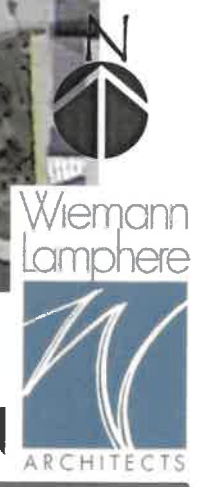
All reports, drawings, specifications, computer files, field data, notes and other documents and instruments prepared by the Consultant or instruments of service shall remain the property of the Consultant. The Consultant shall retain all common law, statutory and other reserved rights, including the copyright therein.

# HINESBURG TOWN HALL

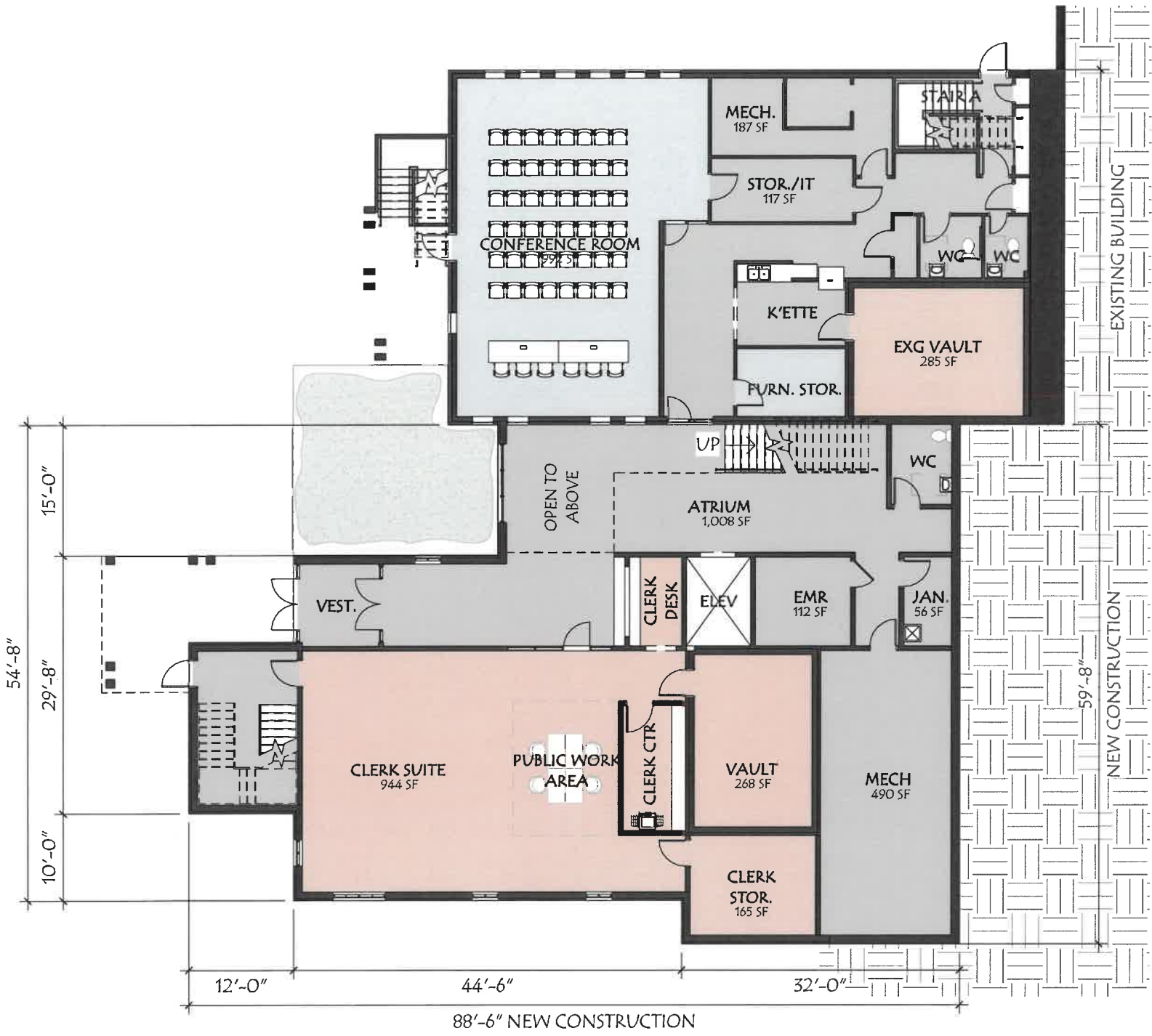
ROUTE 16, HINESBURG, VERMONT

# SCHEMATIC SITE PLAN

DECEMBER 15, 2022

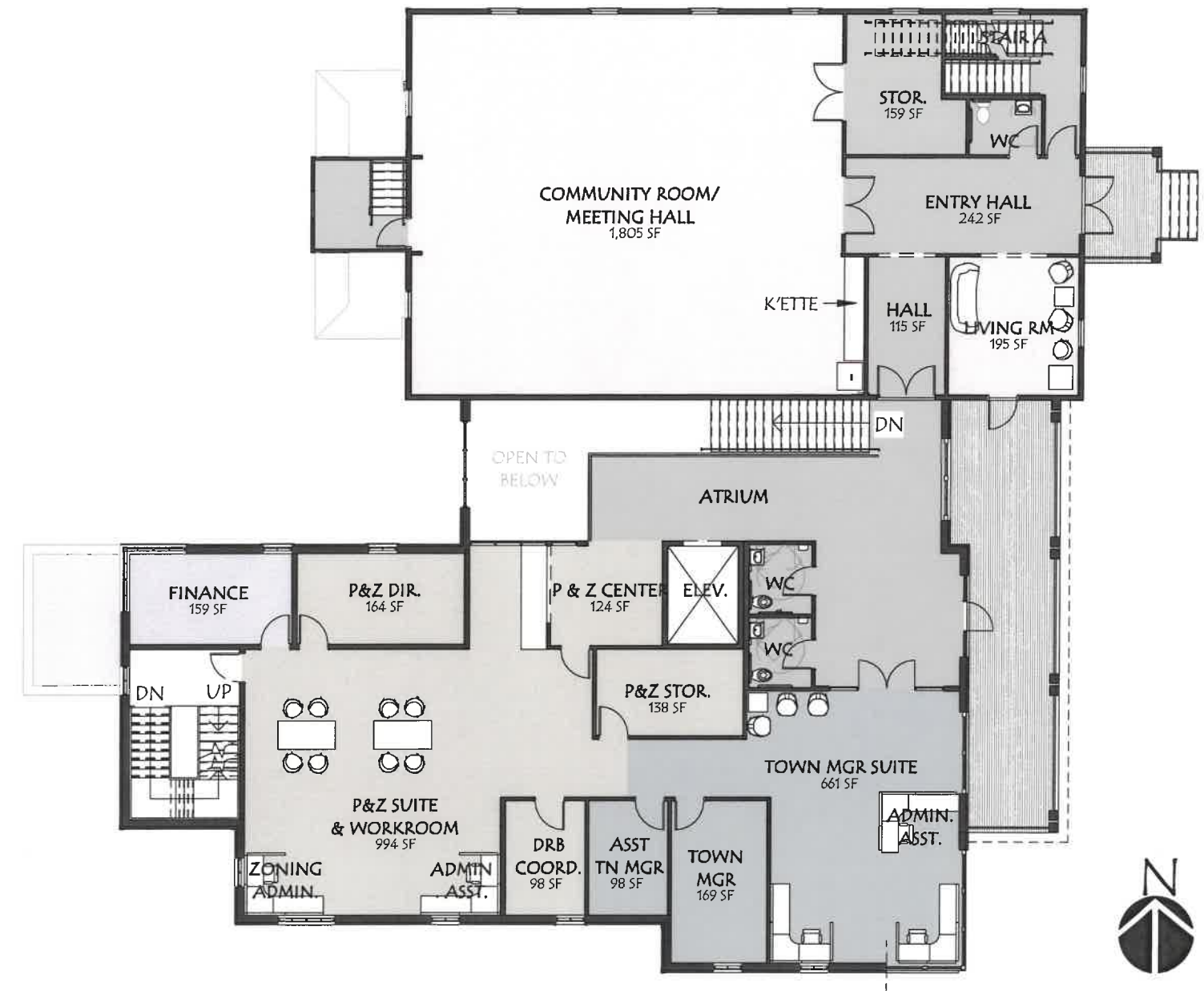


All reports, drawings, specifications, computer files, field data, notes and other documents and instruments prepared by the Consultant are instruments of service and remain the property of the Consultant. The Consultant shall retain all common law, statutory and other reserved rights, including the copyright therein.



**1 GROUND LEVEL**  
SD-2 1/16" = 1'-0"

EXISTING TOWN HALL/PROPOSED COMMUNITY CENTER = 8,400 GSF  
TOWN HALL ADDITION = ≈ 12,850 GSF



**2 LEVEL 1**  
SD-2 1/16" = 1'-0"

# HINESBURG TOWN HALL

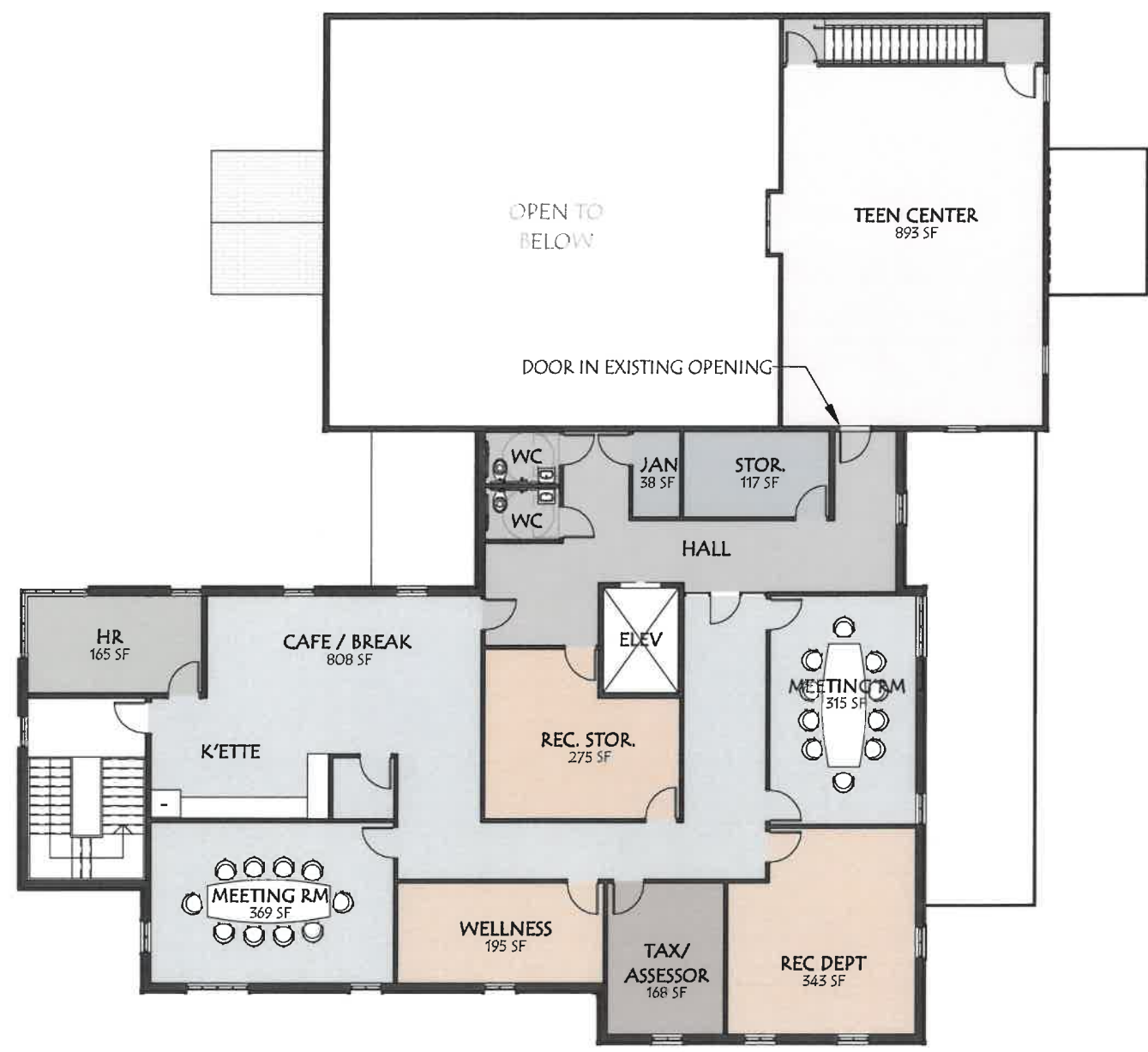
ROUTE 16, HINESBURG, VERMONT

## OPTION 2A - FLOOR PLANS

DECEMBER 15, 2022



All reports, drawings, specifications, computer files, field data, notes and other documents and instruments prepared by the Consultant or its instruments or services shall remain the property of the Consultant. The Consultant shall retain all common law, statutory and other reserved rights, including the copyright therein.



# HINESBURG TOWN HALL

ROUTE 16, HINESBURG, VERMONT

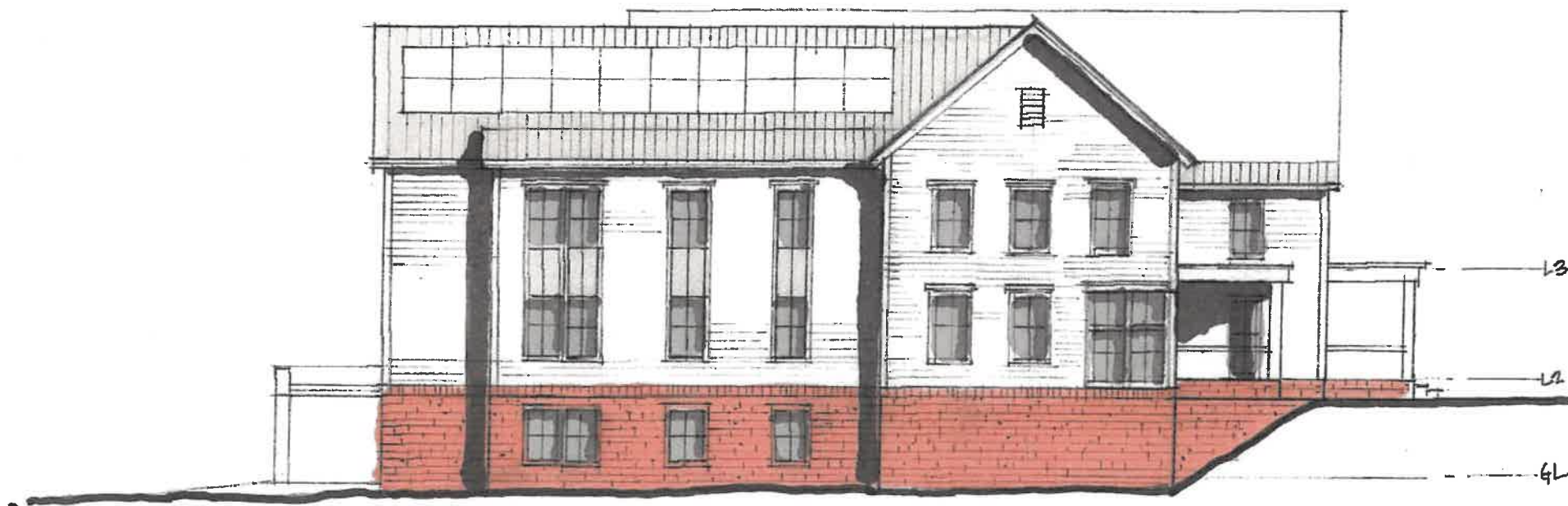
## OPTION 2A - MEZZANINE

DECEMBER 15, 2022





EAST



SOUTH

# HINESBURG TOWN HALL

ROUTE 16, HINESBURG, VERMONT

OPTION 2A - ELEVATIONS E & S

DECEMBER 15, 2022





WEST

# HINESBURG TOWN HALL

ROUTE 16, HINESBURG, VERMONT

OPTION 2A - ELEVATIONS W

DECEMBER 15, 2022



All reports, drawings, specifications, computer files, field data, notes and other documents and instruments prepared by the Consultant are instruments of service and remain the property of the Consultant. The Consultant shall retain all common law, statutory and other reserved rights, including the copyright therein.

Ownership of Instruments of Service



# HINESBURG TOWN HALL

ROUTE 16, HINESBURG, VERMONT

116 LOOKING WEST

DECEMBER 15, 2022



All reports, drawings, specifications, computer files, field data, notes and other documents and instruments prepared by the Consultant or instruments of service shall remain the property of the Consultant. The Consultant shall retain all common law, statutory and other reserved rights, including the copyright therein.



# HINESBURG TOWN HALL

ROUTE 16, HINESBURG, VERMONT

LATMAN'S KITTY CORNER - LOOKING NW

DECEMBER 15, 2022



All reports, drawings, specifications, computer files, field data, notes and other documents and instruments prepared by the Consultant or instruments of service shall remain the property of the Consultant. The Consultant shall retain all common law, statutory and other reserved rights, including the copyright therein.

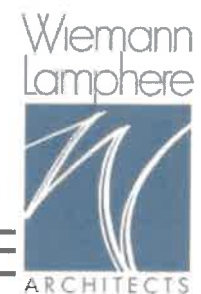


# HINESBURG TOWN HALL

ROUTE 16, HINESBURG, VERMONT

CHARLOTTE ROAD - LOOKING NE

DECEMBER 15, 2022





All reports, drawings, specifications, computer files, field data, notes and other documents and instruments prepared by the Consultant as instruments of service shall remain the property of the Consultant. The Consultant shall retain all common law, statutory and other reserved rights, including the copyright therein.



# HINESBURG TOWN HALL

ROUTE 16, HINESBURG, VERMONT

EXISTING PARKING LOT CORNER - LOOKING EAST

DECEMBER 15, 2022

