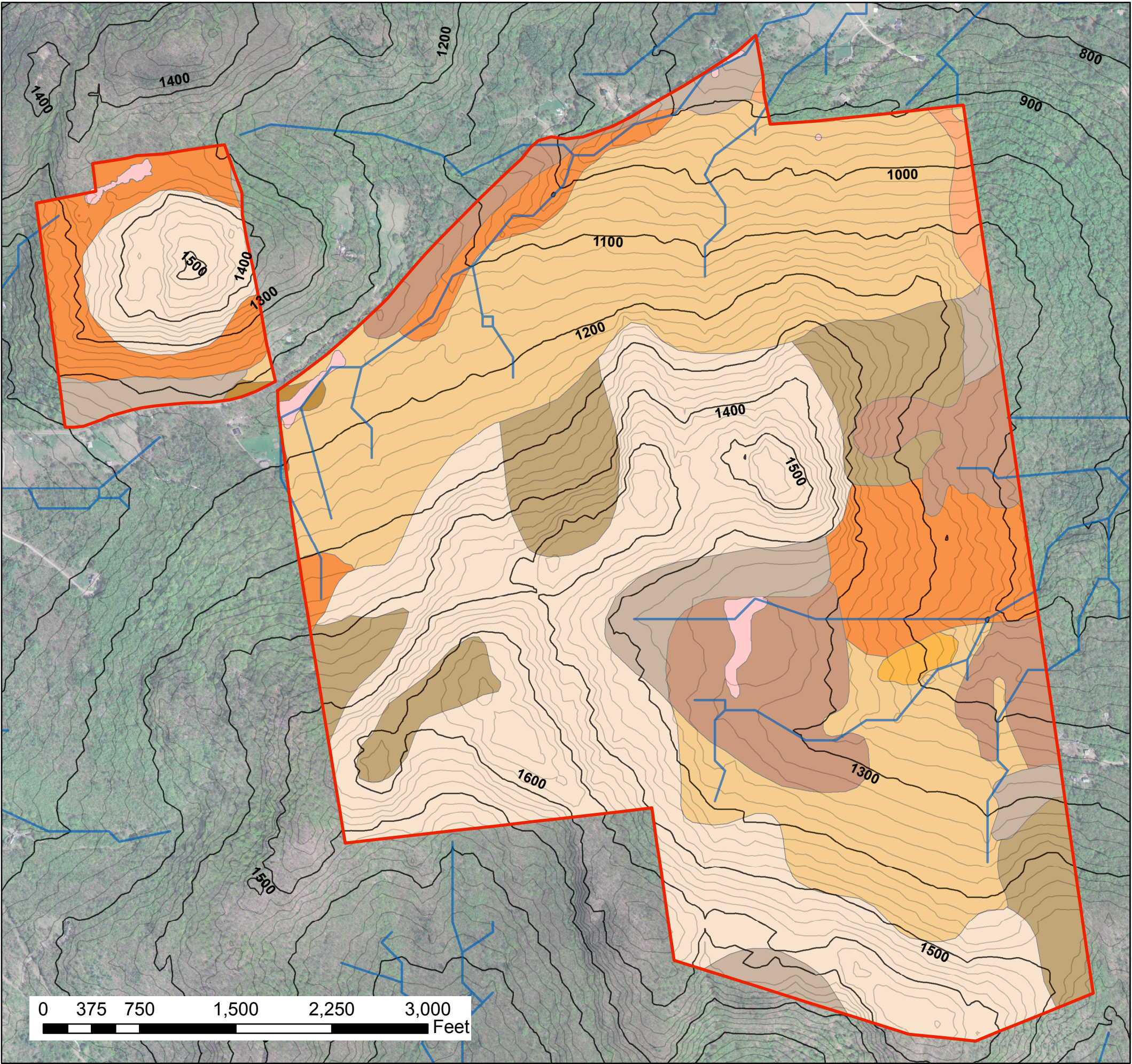


SOILS

Map 3

Hinesburg Town Forest
Hinesburg, VT
May 2006



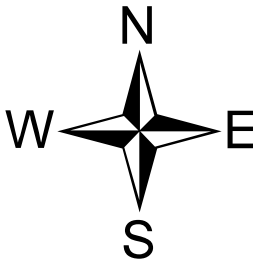
Legend

- HTF Boundary
- Streams

Soil Types

- Cabot extremely stony silt loam, 0-3% Slopes
- Lyman-Marlow very rocky loam, 30-60% Slopes
- Lyman-Marlow very rocky loam, 5-30% Slopes
- Marlow extremely stony loam, 20-60% Slopes
- Marlow extremely stony loam, 5-20% Slopes
- Marlow stony loam, 12-20% Slopes
- Marlow stony loam, 5-12% Slopes
- Peru extremely stony loam, 0-20% Slopes
- Peru extremely stony loam, 20-60% Slopes
- Peru stony loam, 5-12% Slopes
- Peacham stony silt loam, 0-1% Slopes

1:9,600 Contour Interval = 20 ft.



Map created by LIA Consultants

All layers produced by LIA Consultants or provided by
Vermont Center for Geographic Information,
Chittenden County Metropolitan Planning Organization
and Natural Resources Conservation Service

All boundaries and waterways are provisional