

LEGEND

- Wetland - VSWI**
 - Class 1 Wetland
 - Class 2 Wetland
 - Buffer
- Wetlands Advisory Layer
- Parcels (standardized)
- Roads**
 - Interstate
 - US Highway; 1
 - State Highway
 - Town Highway (Class 1)
 - Town Highway (Class 2,3)
 - Town Highway (Class 4)
 - State Forest Trail
 - National Forest Trail
 - Legal Trail
 - Private Road/Driveway
 - Proposed Roads
- Stream/River**
 - Stream
 - Intermittent Stream
- Town Boundary

1: 9,741
January 28, 2022

NOTES

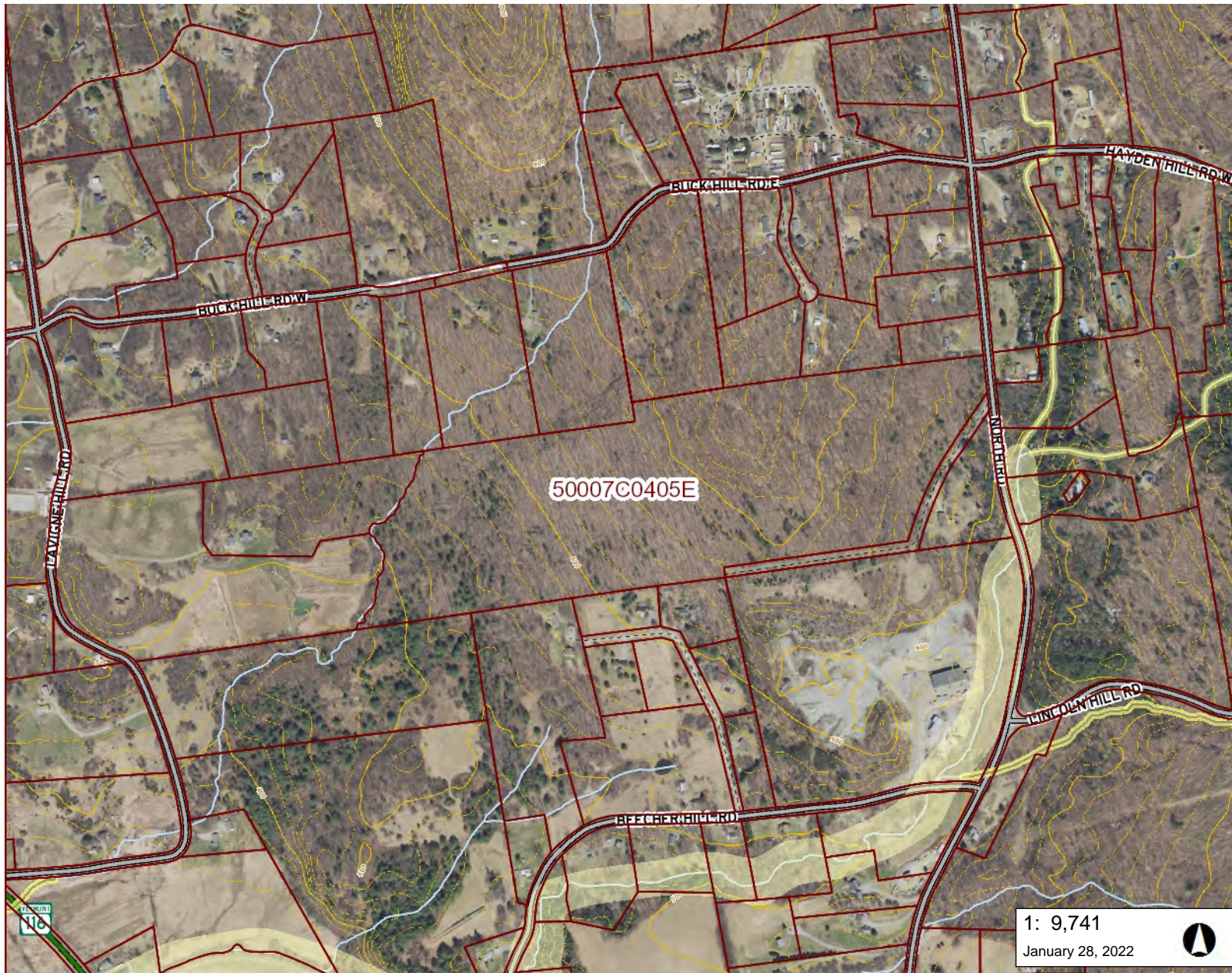
Map created using ANR's Natural Resources Atlas



WGS_1984_Web_Mercator_Auxiliary_Sphere
© Vermont Agency of Natural Resources

1" = 812 Ft. 1cm = 97 Meters
THIS MAP IS NOT TO BE USED FOR NAVIGATION

DISCLAIMER: This map is for general reference only. Data layers that appear on this map may or may not be accurate, current, or otherwise reliable. ANR and the State of Vermont make no representations of any kind, including but not limited to, the warranties of merchantability, or fitness for a particular use, nor are any such warranties to be implied with respect to the data on this map.



LEGEND

- DFIRM Panels
- DFIRM Floodways
- Flood Hazard Areas (Only FEM)**
 - AE (1-percent annual chance flood)
 - A (1-percent annual chance floodpl)
 - AO (1-percent annual chance zone feet)
 - 0.2-percent annual chance flood ha
- River Corridors (Aug 27, 2019)
 - .5 - 2 sqmi.
 - .25-.5 sqmi.
- River Corridor Easement
- Parcels (standardized)
- Roads**
 - Interstate
 - US Highway; 1
 - State Highway
 - Town Highway (Class 1)
 - Town Highway (Class 2,3)
 - Town Highway (Class 4)
 - State Forest Trail
 - National Forest Trail
 - Legal Trail
 - Private Road/Driveway
 - Proposed Roads
- Stream/River**
 - Stream
 - Intermittent Stream

1: 9,741
January 28, 2022

NOTES

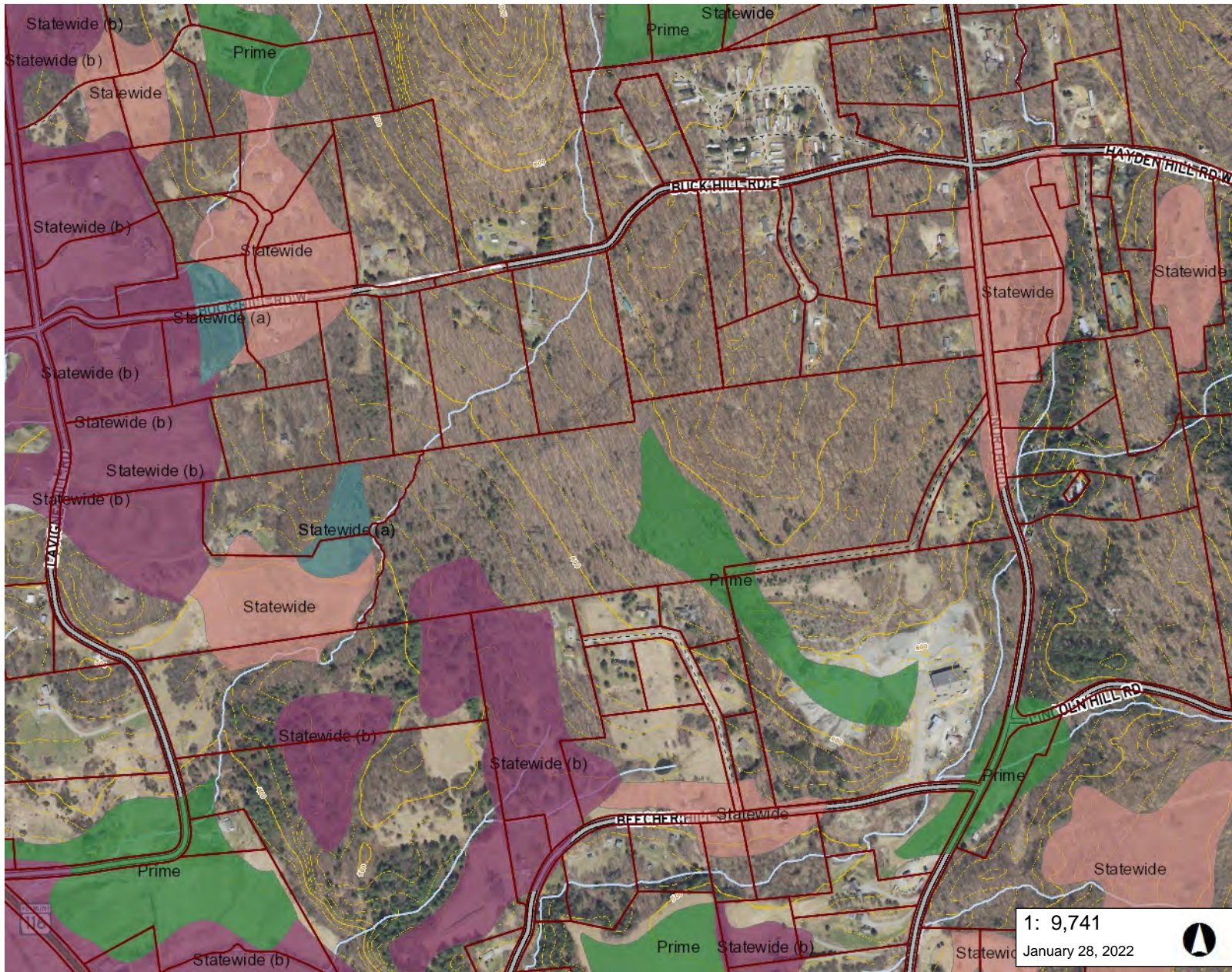
Map created using ANR's Natural Resources Atlas



WGS_1984_Web_Mercator_Auxiliary_Sphere
© Vermont Agency of Natural Resources

1" = 812 Ft. 1cm = 97 Meters
THIS MAP IS NOT TO BE USED FOR NAVIGATION

DISCLAIMER: This map is for general reference only. Data layers that appear on this map may or may not be accurate, current, or otherwise reliable. ANR and the State of Vermont make no representations of any kind, including but not limited to, the warranties of merchantability, or fitness for a particular use, nor are any such warranties to be implied with respect to the data on this map.



LEGEND

Soils - Prime Agricultural

- Local
- Local (b)
- Not rated
- Prime
- Prime (b)
- Prime (f)
- Statewide
- Statewide (a)
- Statewide (b)
- Statewide (c)

Parcels (standardized)

Roads

- Interstate
- US Highway; 1
- State Highway
- Town Highway (Class 1)
- Town Highway (Class 2,3)
- Town Highway (Class 4)
- State Forest Trail
- National Forest Trail
- Legal Trail
- Private Road/Driveway
- Proposed Roads

Stream/River

- Stream
- Intermittent Stream

1: 9,741
January 28, 2022



NOTES

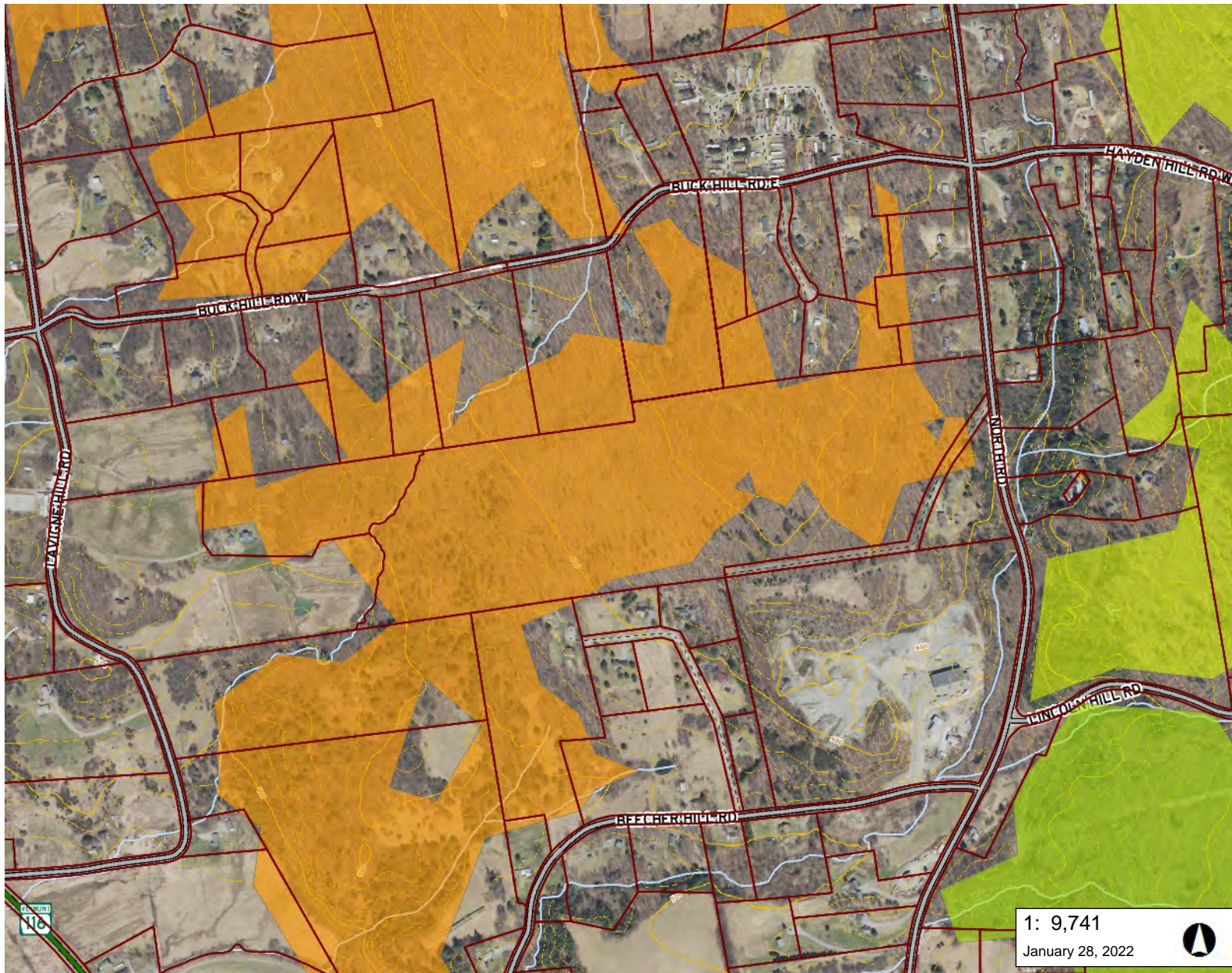
Map created using ANR's Natural Resources Atlas

495.0 0 248.00 495.0 Meters

WGS_1984_Web_Mercator_Auxiliary_Sphere 1" = 812 Ft. 1cm = 97 Meters

© Vermont Agency of Natural Resources THIS MAP IS NOT TO BE USED FOR NAVIGATION

DISCLAIMER: This map is for general reference only. Data layers that appear on this map may or may not be accurate, current, or otherwise reliable. ANR and the State of Vermont make no representations of any kind, including but not limited to, the warranties of merchantability, or fitness for a particular use, nor are any such warranties to be implied with respect to the data on this map.



LEGEND

- Rare Threatened Endangered**
 - Threatened or Endangered
 - Rare
- Deer Wintering Areas**
 - Deer Wintering Areas
- Habitat Blocks**
 - 10 - Higher Priority
 - 9
 - 8
 - 7
 - 6
 - 5
 - 4
 - 3
 - 2
 - 1 - Lower Priority
 - 0
- Parcels (standardized)**
 - Parcels (standardized)
- Roads**
 - Interstate
 - US Highway; 1
 - State Highway
 - Town Highway (Class 1)
 - Town Highway (Class 2,3)
 - Town Highway (Class 4)
 - State Forest Trail
 - National Forest Trail
 - Legal Trail
 - Private Road/Drive

1: 9,741
January 28, 2022

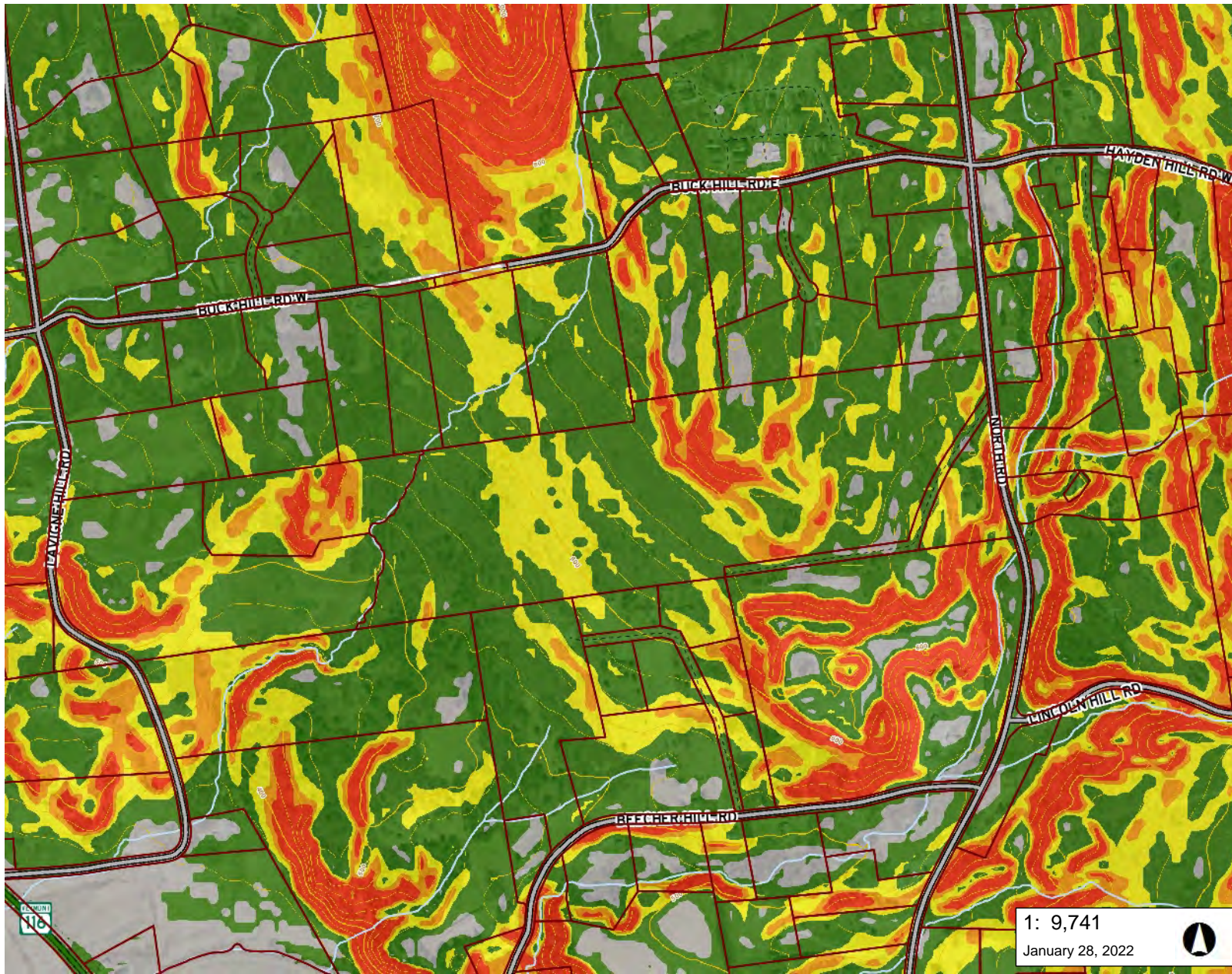


495.0 0 248.00 495.0 Meters
 WGS_1984_Web_Mercator_Auxiliary_Sphere
 © Vermont Agency of Natural Resources
 1" = 812 Ft. 1cm = 97 Meters
 THIS MAP IS NOT TO BE USED FOR NAVIGATION

DISCLAIMER: This map is for general reference only. Data layers that appear on this map may or may not be accurate, current, or otherwise reliable. ANR and the State of Vermont make no representations of any kind, including but not limited to, the warranties of merchantability, or fitness for a particular use, nor are any such warranties to be implied with respect to the data on this map.

NOTES

Map created using ANR's Natural Resources Atlas



LEGEND

- Parcels (standardized)
- Roads**
 - Interstate
 - US Highway; 1
 - State Highway
 - Town Highway (Class 1)
 - Town Highway (Class 2,3)
 - Town Highway (Class 4)
 - - - State Forest Trail
 - - - National Forest Trail
 - Legal Trail
 - - - Private Road/Driveway
 - Proposed Roads
- Stream/River**
 - Stream
 - - - Intermittent Stream
- Town Boundary
- Slope**
 - <5%
 - 5-15%
 - 15-20%
 - 20-25%
 - >25%

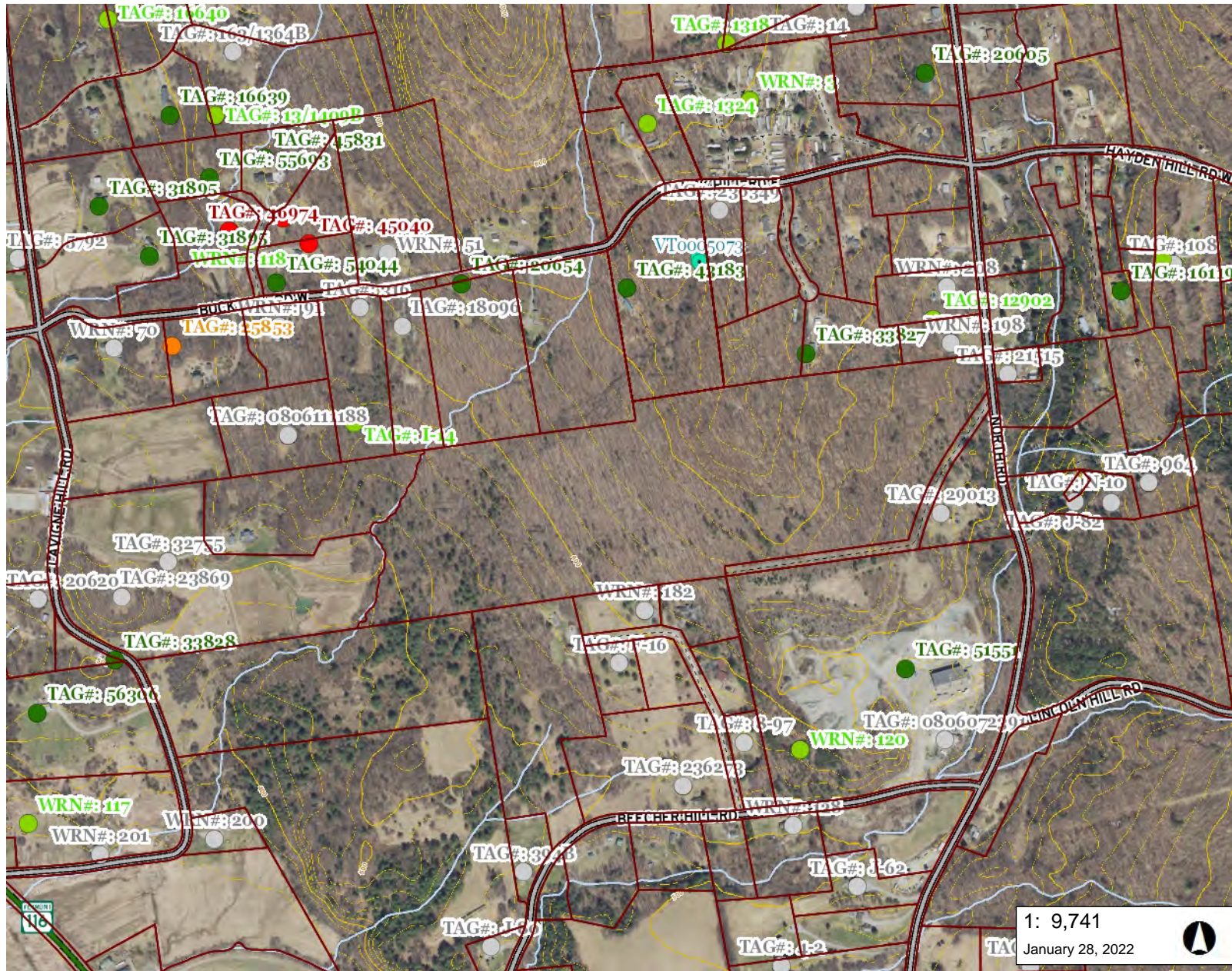
1: 9,741
 January 28, 2022

495.0 0 248.00 495.0 Meters
 WGS_1984_Web_Mercator_Auxiliary_Sphere 1" = 812 Ft. 1cm = 97 Meters
 © Vermont Agency of Natural Resources THIS MAP IS NOT TO BE USED FOR NAVIGATION

DISCLAIMER: This map is for general reference only. Data layers that appear on this map may or may not be accurate, current, or otherwise reliable. ANR and the State of Vermont make no representations of any kind, including but not limited to, the warranties of merchantability, or fitness for a particular use, nor are any such warranties to be implied with respect to the data on this map.

NOTES

Map created using ANR's Natural Resources Atlas



LEGEND

- Private Wells**
- Incorrectly Located
 - GPS Located
 - Screen Digitized
 - E911 Address Matched
 - Welldriller/Clarion
 - Unknown Location Method


- Public Water Sources**
- Active
 - Proposed
 - Inactive

- Parcels (standardized)

- Roads**
- Interstate
 - US Highway; 1
 - State Highway
 - Town Highway (Class 1)
 - Town Highway (Class 2,3)
 - Town Highway (Class 4)
 - State Forest Trail
 - National Forest Trail
 - Legal Trail
 - Private Road/Driveway
 - Proposed Roads

- Stream/River**
- Stream
 - Intermittent Stream

1: 9,741
January 28, 2022



NOTES

Map created using ANR's Natural Resources Atlas

495.0 0 248.00 495.0 Meters

WGS_1984_Web_Mercator_Auxiliary_Sphere 1" = 812 Ft. 1cm = 97 Meters

© Vermont Agency of Natural Resources THIS MAP IS NOT TO BE USED FOR NAVIGATION

DISCLAIMER: This map is for general reference only. Data layers that appear on this map may or may not be accurate, current, or otherwise reliable. ANR and the State of Vermont make no representations of any kind, including but not limited to, the warranties of merchantability, or fitness for a particular use, nor are any such warranties to be implied with respect to the data on this map.