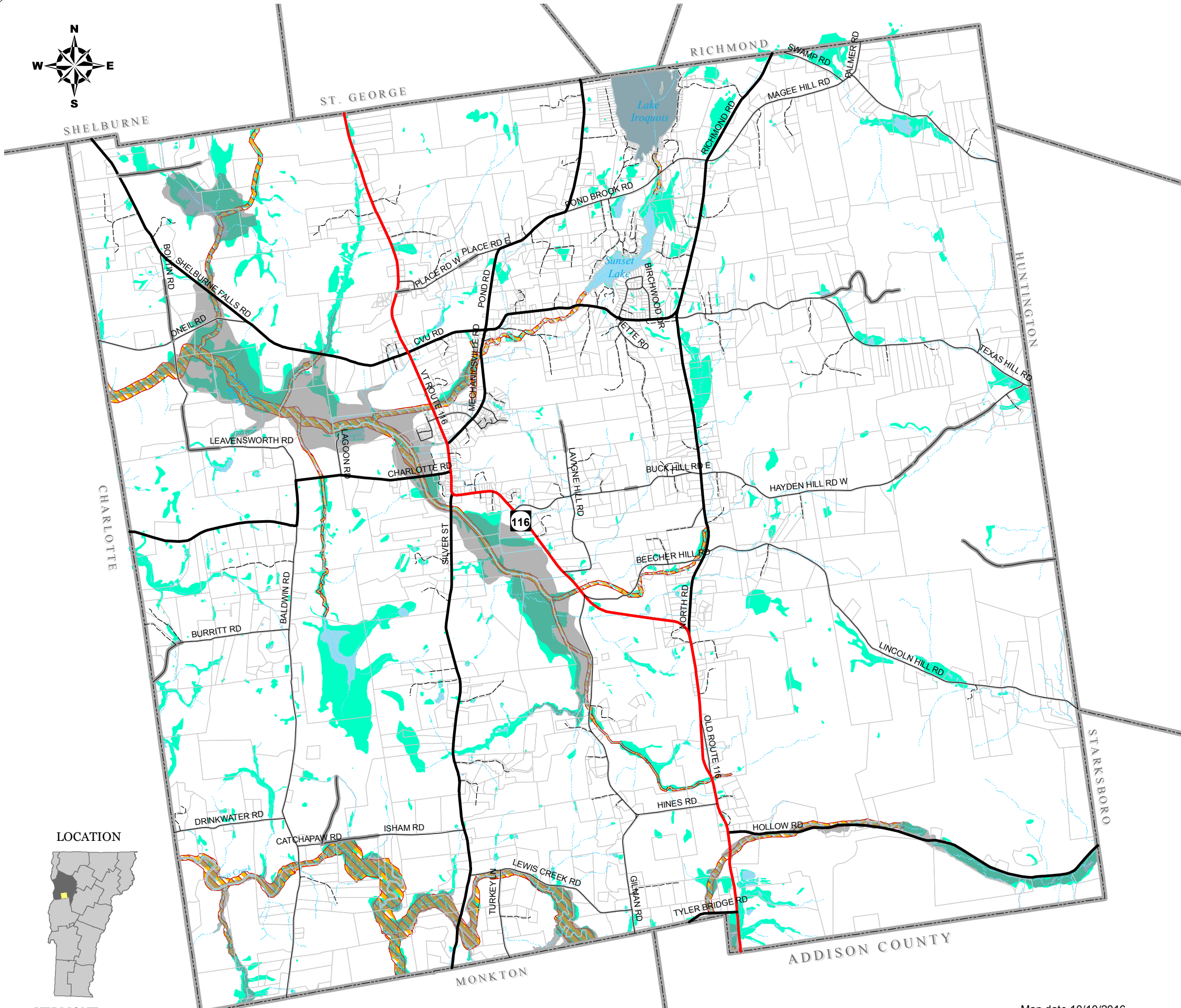


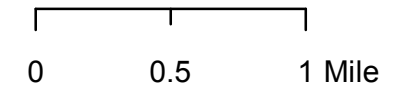
# Map 7: Wetlands & Flood Hazard Areas Town of Hinesburg



## Legend

- VT State Highway
- Class 2 Town Road
- Class 3 Town Road
- Class 4 Town Road
- Private Road
- Town Boundary
- Rivers, Streams
- Parcel Boundary
- FEMA Special Flood Hazard Area
- Fluvial Erosion Hazard Area
- Lake, Pond or River
- Wetland

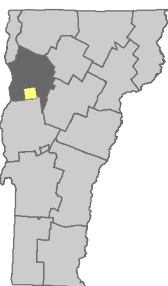
1:45,000



Sources:  
 Special Flood Hazard Area - FEMA (8/4/2011)  
 Fluvial Erosion Hazard Area - VT ANR (6/7/2010)  
 Wetlands - VT Significant Wetlands, VCGI (2010); UMASS dataset, Town of Hinesburg (1997)  
 Roads - E911 Roads with corrections, VCGI (5/1/2016), Town corrections (10/10/2016)  
 Parcels - 2016 parcels, Town (6/2016)  
 Surface water - VT Hydrography Dataset (VHD) Carto, VCGI (6/9/2010)

Disclaimer:  
 The accuracy of information presented is determined by its sources. Errors and omissions may exist. Questions of on-the-ground location can be resolved by site inspections and/or surveys by a registered surveyor. This map is not sufficient for delineation of features on-the-ground. This map identifies the presence of features, and may indicate relationships between features, but is not a replacement for surveyed information or engineering studies.

### LOCATION



VERMONT

This map is designed to be viewed in color, and is available at [www.hinesburg.org](http://www.hinesburg.org)

Map date 10/10/2016  
 by Hinesburg Planning & Zoning

H:\awein\hagen\Files\...map7\_wetflood\_101016.mxd