

SITE KEY PLAN

A EXISTING TOWN HALL LOCATION

OPEN FIELD AVAILABLE FOR CONSTRUCTION
 POSSIBLE ADDITION TO EXISTING BUILDING
 NOT GOOD LOCATION FOR EMERGENCY SERVICES
 TOWN HALL LOCATION CONTINUITY
 STRUCTURAL ROOF REPAIR NEEDED

B EXISTING FIRE STATION & TOWN LAND

OPEN SPACE AVAILABLE FOR CONSTRUCTION
 GOOD LOCATION FOR EMERGENCY SERVICES /TOWN HALL
 DIRECT ACCESS TO RT 116
 SEWER PUMP STATION LIMITATIONS

C EXISTING AUTO SHOP / SALVAGE YARD

UNKNOWN AVAILABILITY (SITE ACQUISITION POTENTIAL)
 DIRECT ACCESS TO RT 116 IS FAVORABLE
 PROXIMITY TO OTHER TOWN FACILITIES
 (POLICE & POTENTIAL TOWN HALL RELOCATION)
 MAXIMUM CIVIC IDENTITY POTENTIAL
 COST ASSOCIATED WITH RELOCATING EXISTING SHOPS

D GREEN FIELD SITE

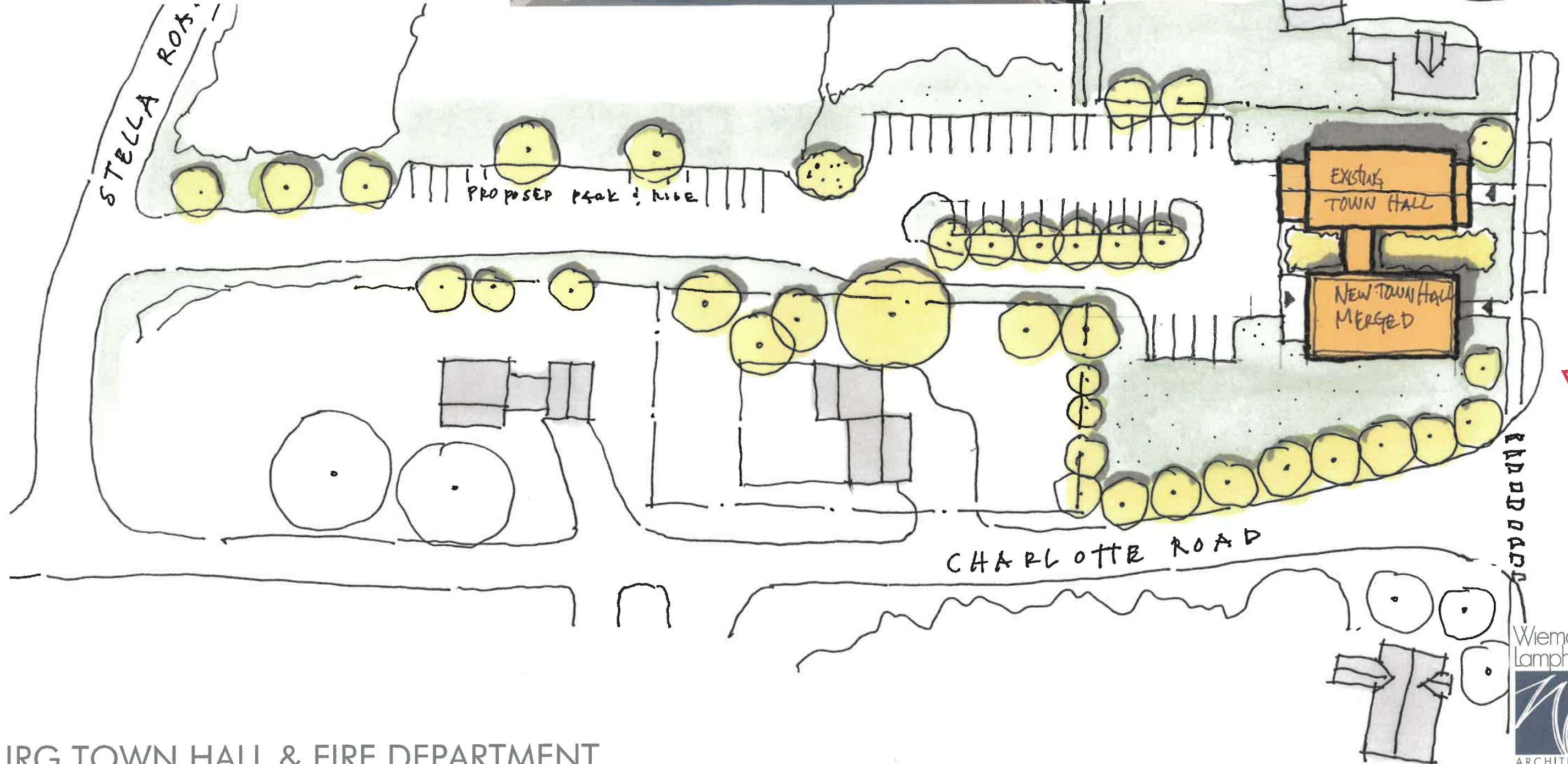
OPEN FIELD - LAND PURCHASE REQUIRED
 NOT IDEAL ACCESS FOR EMERGENCY SERVICES
 NOT IDEAL VISIBILITY FOR TOWN FACILITIES
 POTENTIAL FOR R.O.W. ACCESS TO RT 116?
 SOME MINOR WETLANDS
 20' WIDE SEWER EASEMENT THROUGH SITE

CONCEPT A

- UTILIZES SITE A (TOWN OWNED BUILDING & LAND)
- MULTI-LEVEL ADDITION POSSIBLE
- REDUCES AMOUNT OF NEW CONSTRUCTION REQUIRED
(REUSE OF EXIST. BUILDING FOR SOME FUNCTIONS)
- TOWN HALL LOCATION CONTINUITY
- ENGAGES STREET CORNER



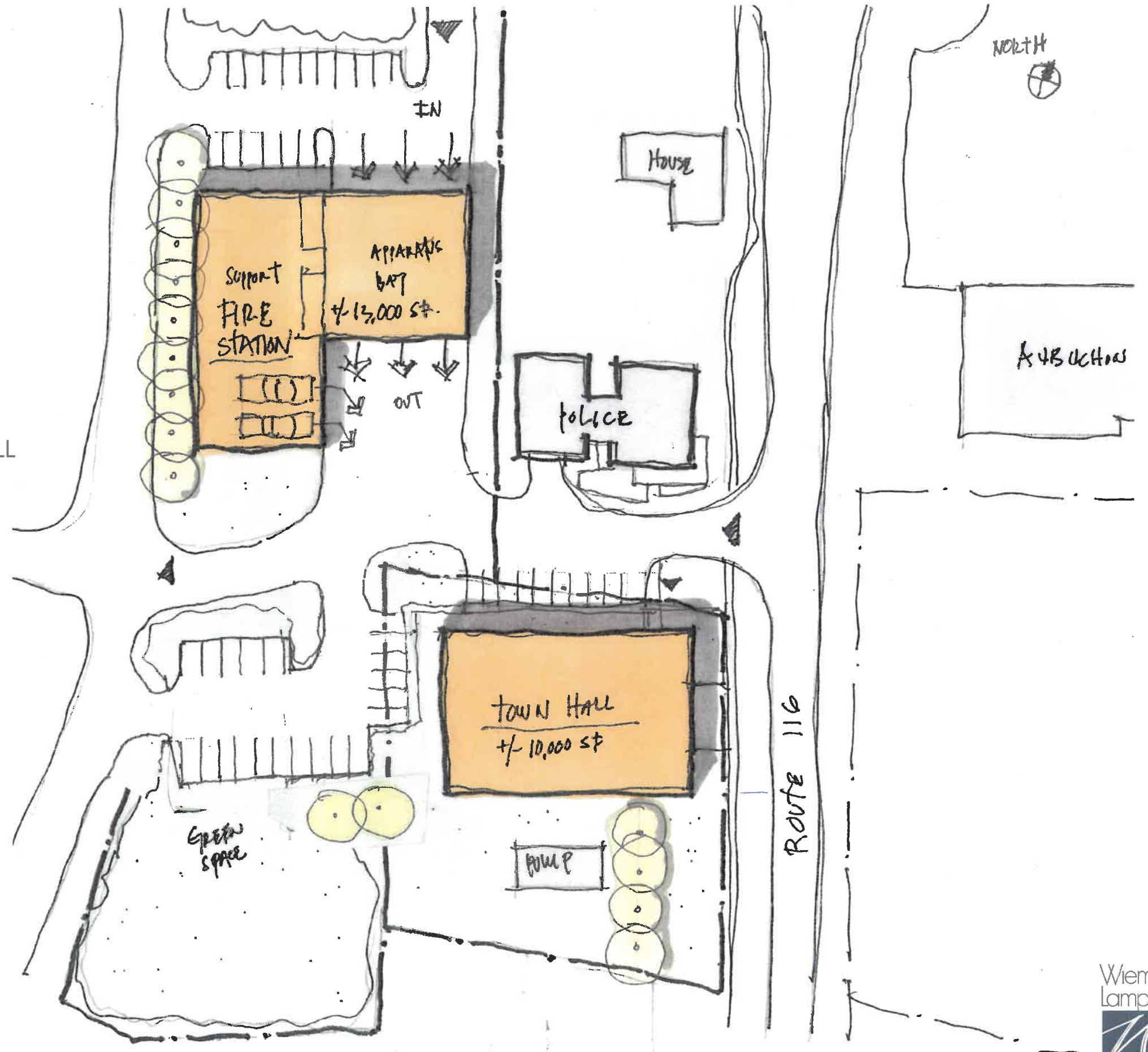
North



IMAGE

CONCEPT B1

- UTILIZES SITE B (TOWN OWNED LAND)
- RELATIVELY FLAT SITE
- BEST VISIBILITY TO RT 116 FOR TOWN HALL
- LESS THAN IDEAL EMERGENCY SERVICE ACCESS TO ROUTE 116
- FIRE STATION CLOSER TO RESIDENTIAL AREA (POTENTIAL SOUND CONCERN)
- ADEQUATE SPACE TO FIT BOTH PROGRAMS
- CIVIC CAMPUS - POLICE, FIRE, EMS AND TOWN HALL
- POTENTIAL FOR SOME GREEN SPACE/FARMERS MKT



HINESBURG TOWN HALL & FIRE DEPARTMENT

HINESBURG, VT

CONCEPT B2

- UTILIZES SITE B (TOWN OWNED LAND)
- RELATIVELY FLAT SITE
- BEST VISIBILITY/ACCESS TO RT 116 FOR FIRE/EMS
- LESS VISIBILITY FOR TOWN HALL
- FIRE STATION LOSES DRIVE-THRU ACCESS POTENTIAL
- CIVIC CAMPUS - POLICE, FIRE, EMS AND TOWN HALL
- POTENTIAL FOR SOME GREEN SPACE/FARMERS MKT
- POTENTIAL REUSE OF EXISTING F.D. STRUCTURE

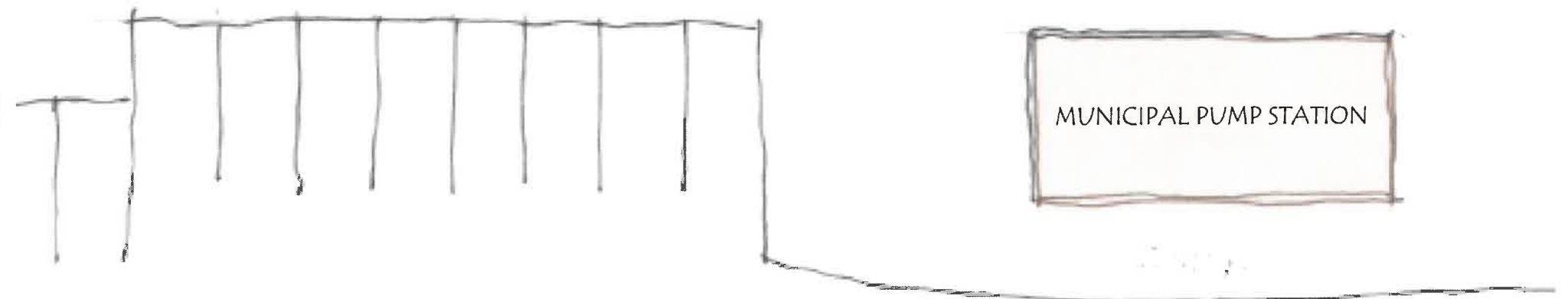
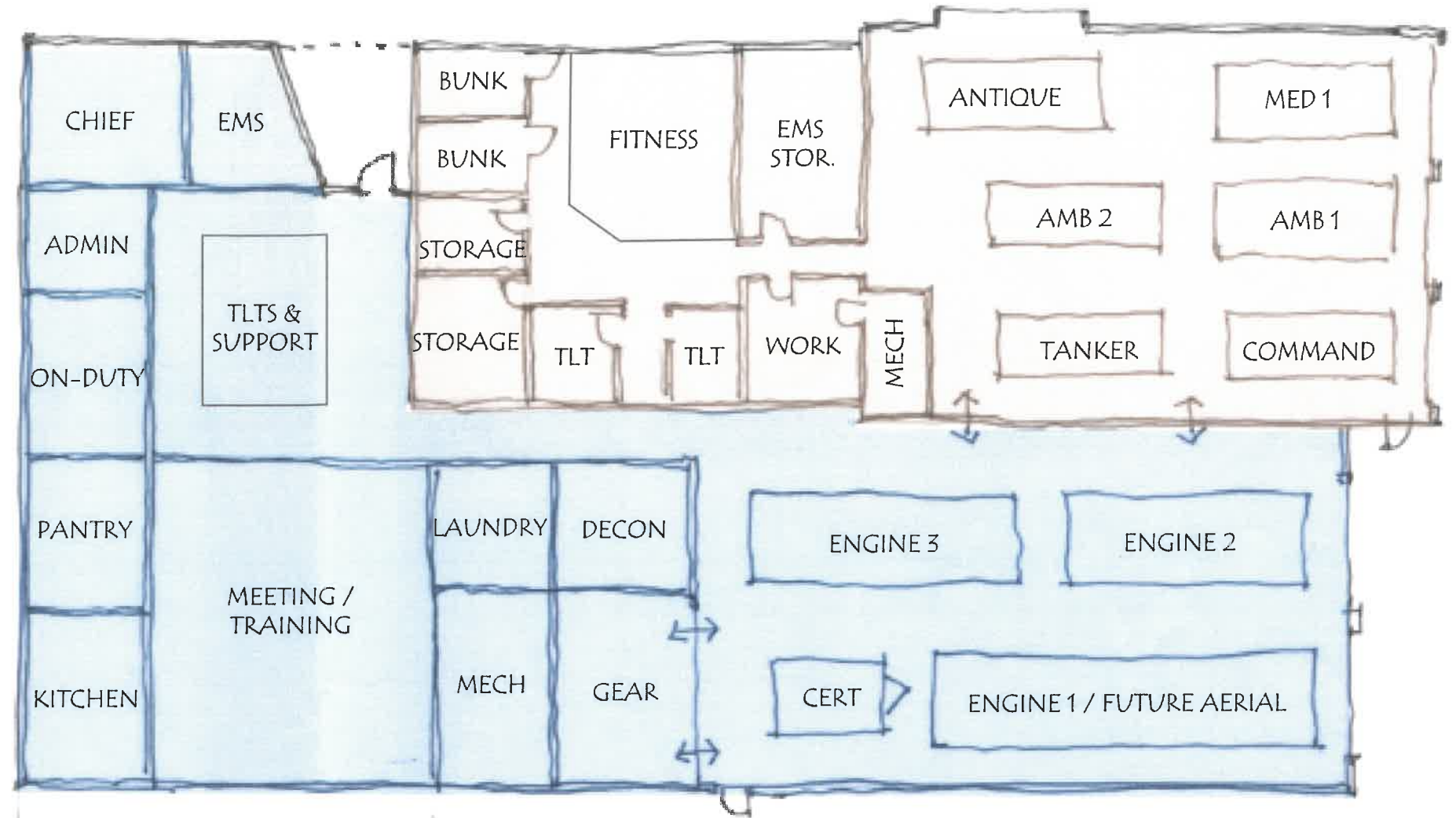


HINESBURG TOWN HALL & FIRE DEPARTMENT

HINESBURG, VT

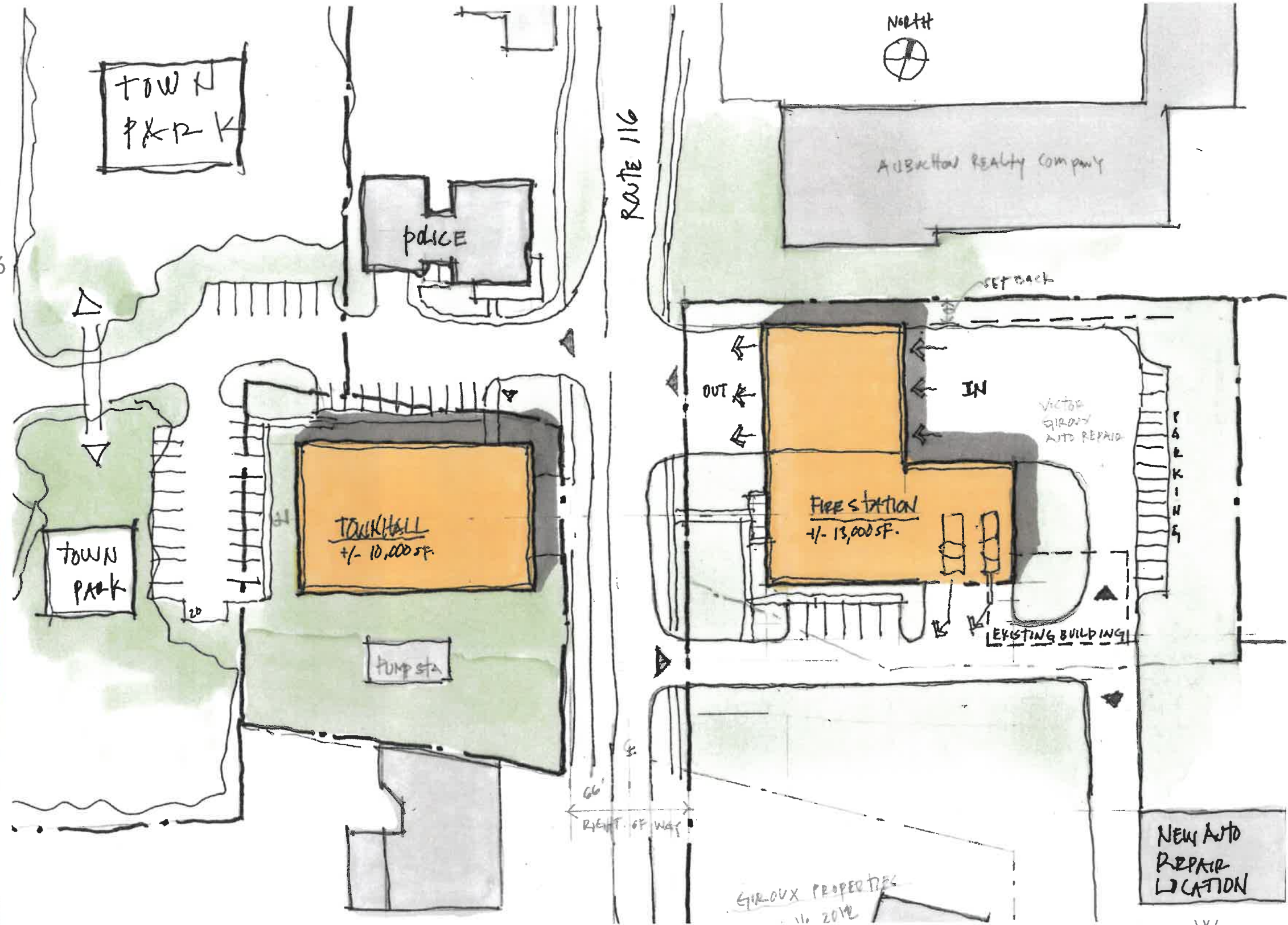
CONCEPT A & B2 FLOOR PLAN

- GENERAL ORGANIZATIONAL STARTING POINT ONLY
- UTILIZE EXISTING BAY FOR SMALLER VEHICLES
- CONSTRUCT NEW BAY FOR LARGER VEHICLES
- RENOVATE EXISTING OFFICE FOR EMS USE
- NEW OFFICES / MEETING / DECON / SUPPORT ETC.
- FD ACCESS THROUGH PUMP STATION PROPERTY
- PUBLIC ACCESS FROM POLICE DEPT SIDE



CONCEPT C

- UTILIZES BOTH SITES B & C
(TOWN OWNED + PURCHASED LAND)
- RELATIVELY FLAT SITES
- ADEQUATE SPACE TO FIT BOTH PROGRAMS
- EXCELLENT CIVIC PRESENCE / IDENTITY
- IDEAL EMERGENCY SERVICE ACCESS TO 116
- SEPARATION TO RESIDENTIAL AREA
- GUT RENO OR REBUILD FOR TOWN HALL
- REQUIRES MOVE/REBUILD OF AUTO SHOP
- ALLOWS TOWN PARK CONSTRUCTION



HINESBURG TOWN HALL & FIRE DEPARTMENT

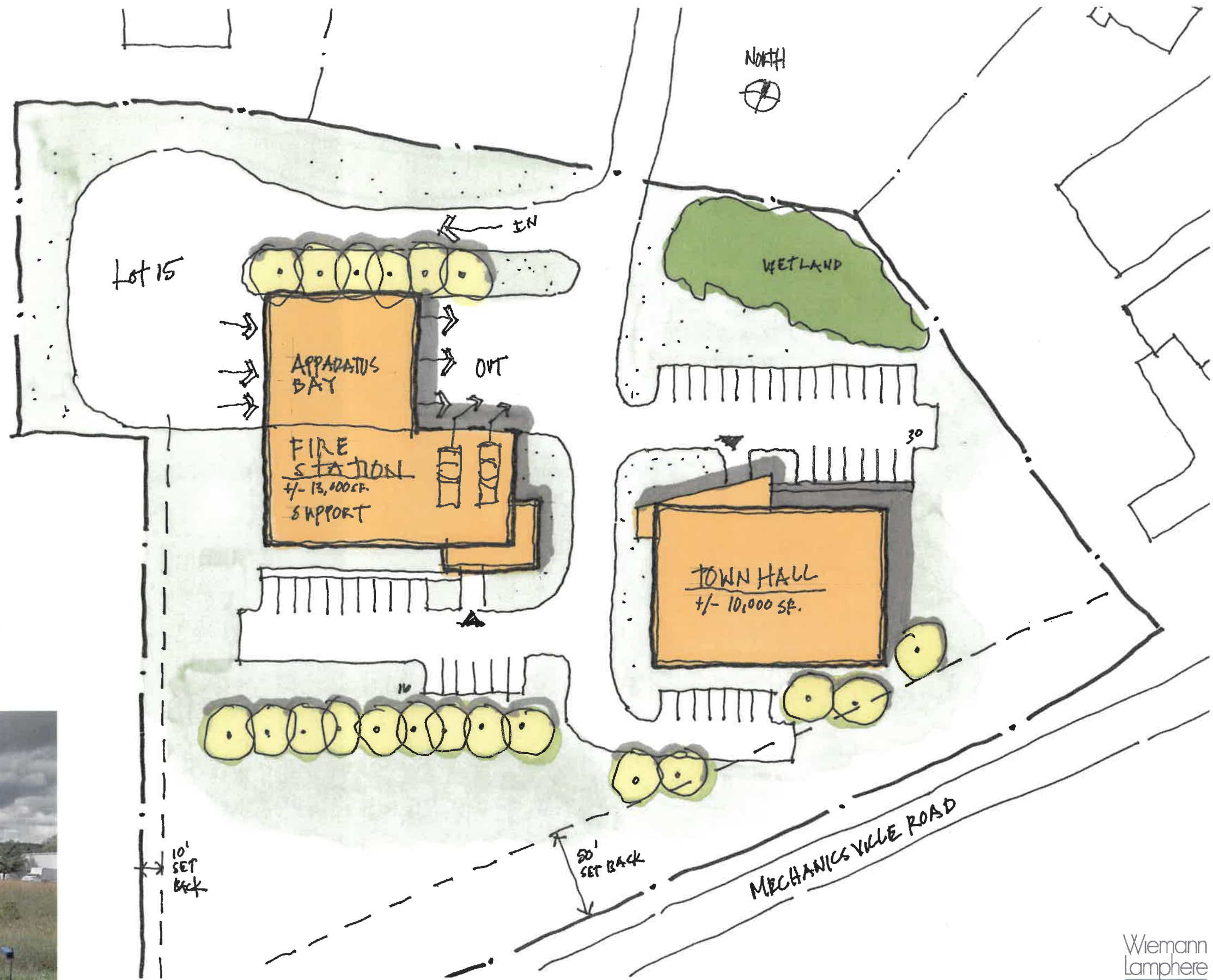
HINESBURG, VT



9/13/2022

CONCEPT D1

- SITE OPTION D (LAND PURCHASE REQUIRED)
- RELATIVELY FLAT, GREEN FIELD SITE
- SOME VISIBILITY FROM MECHANICSVILLE RD,
BUT SITE IS +/- 8' LOWER THAN ROAD
- ADEQUATE SPACE TO FIT BOTH PROGRAMS
- LOW CIVIC PRESENCE / IDENTITY
- LESS THAN IDEAL EMERGENCY SERVICE
ACCESS TO ROUTE 116



HINESBURG TOWN HALL & FIRE DEPARTMENT

HINESBURG, VT

CONCEPT D2

- SITE OPTION D (LAND PURCHASE REQUIRED)
- RELATIVELY FLAT, GREEN FIELD SITE
- SOME VISIBILITY FROM MECHANICSVILLE RD,
BUT SITE IS +/- 8' LOWER THAN ROAD
- ADEQUATE SPACE TO FIT BOTH PROGRAMS
- LOW CIVIC PRESENCE / IDENTITY
- LESS THAN IDEAL EMERGENCY SERVICE
ACCESS TO ROUTE 116
- POTENTIAL FUTURE STREET OVER EXISTING
SEWER EASEMENT

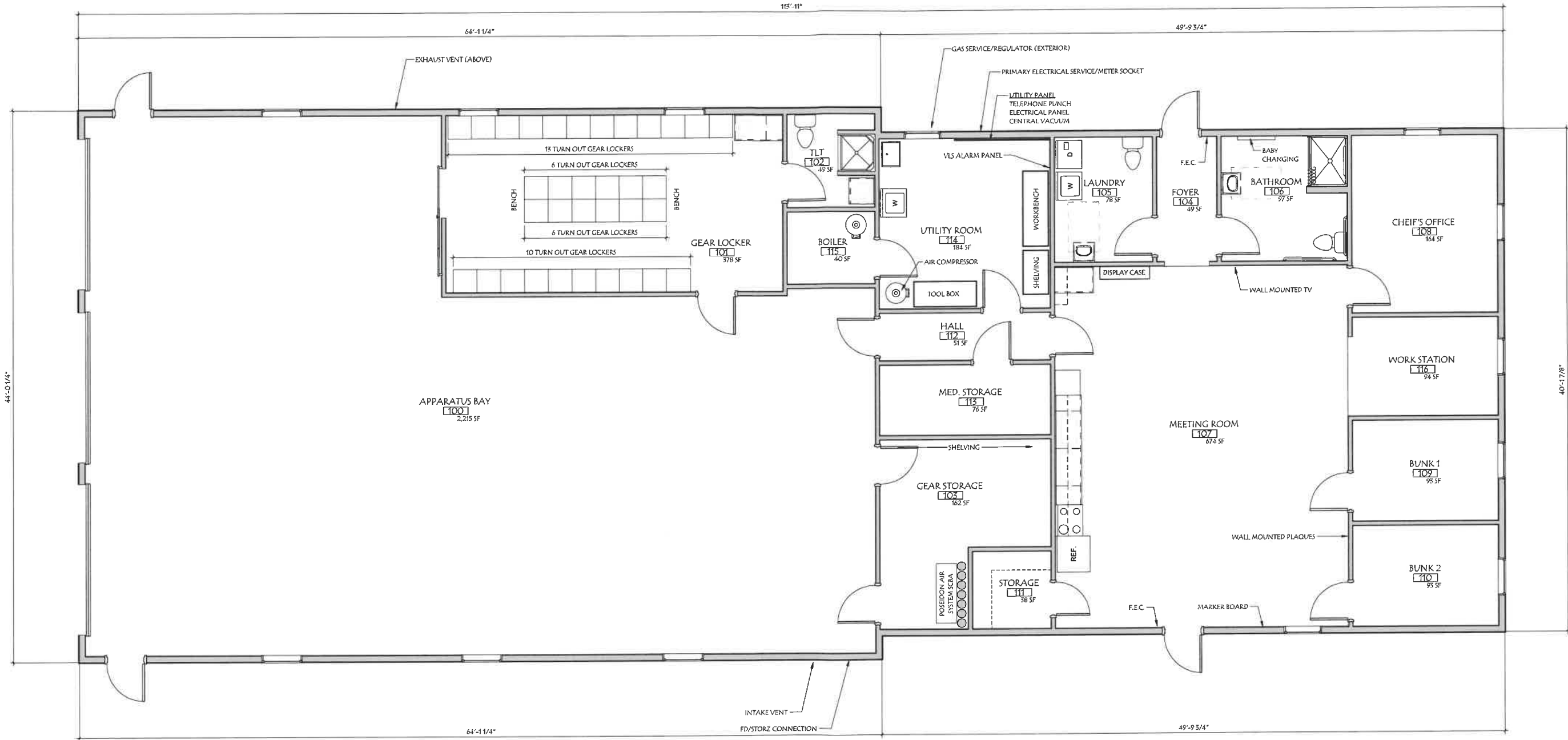


HINESBURG TOWN HALL & FIRE DEPARTMENT

HINESBURG, VT

All reports, drawings, specifications, computer files, field data, notes and other documents prepared by the Consultant are the property of the Consultant. The Consultant shall retain all common law, statutory and other reserved rights, including the copyright therein.

Ownership of Instruments of Service



ROOM AREAS		
Name	Number	Area
APPARATUS BAY	100	2,215 SF
GEAR LOCKER	101	578 SF
TLT	102	49 SF
GEAR STORAGE	103	162 SF
FOYER	104	49 SF
LAUNDRY	105	78 SF
BATHROOM	106	97 SF
MEETING ROOM	107	674 SF
CHEIF'S OFFICE	108	164 SF
BUNK 1	109	95 SF
BUNK 2	110	95 SF
STORAGE	111	38 SF
HALL	112	51 SF
MED. STORAGE	113	76 SF
UTILITY ROOM	114	184 SF
BOILER	115	40 SF
WORK STATION	116	94 SF
Grand total: 17		4,556 SF

GROSS AREA	
Name	Area
GROSS BUILDING	4,849 SF

HINESBURG FIRESTATION

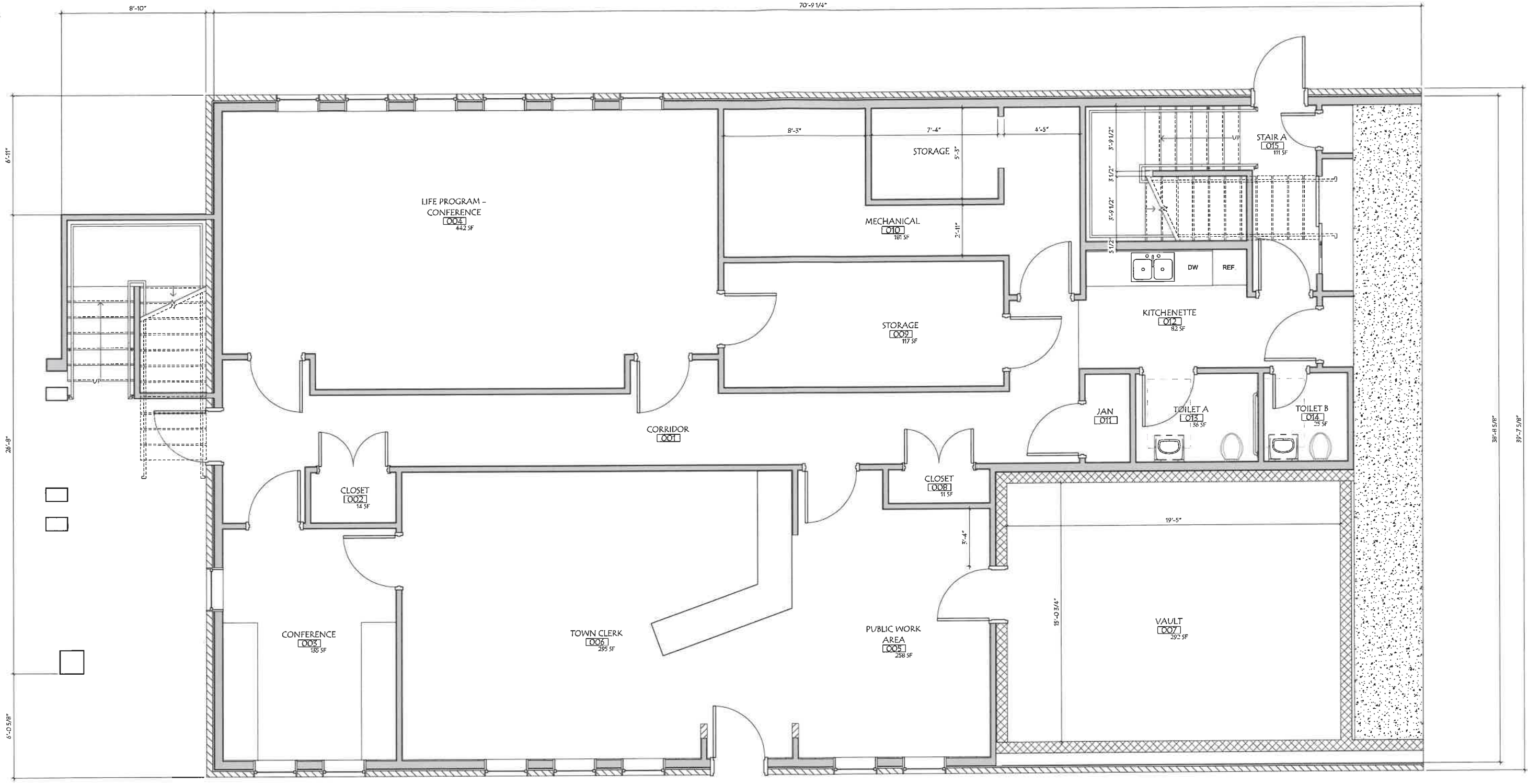
ROUTE 11A HINESBURG VERMONT

FLOOR PLAN



8/20/2022 1:59:30 PM

All reports, drawings, specifications, computer files, field data, notes and other documents prepared by the Consultant as instruments of service shall remain the property of the Consultant. The Consultant shall retain all common law, statutory and other reserved rights, including the copyright therein.



ROOM AREAS			
Level	Number	Name	Area
GROUND LEVEL	001	CORRIDOR	263 SF
GROUND LEVEL	002	CLOSET	14 SF
GROUND LEVEL	003	CONFERENCE	135 SF
GROUND LEVEL	004	LIFE PROGRAM - CONFERENCE	442 SF
GROUND LEVEL	005	PUBLIC WORK AREA	258 SF
GROUND LEVEL	006	TOWN CLERK	295 SF
GROUND LEVEL	007	VAULT	292 SF
GROUND LEVEL	008	CLOSET	11 SF
GROUND LEVEL	009	STORAGE	117 SF
GROUND LEVEL	010	MECHANICAL	181 SF
GROUND LEVEL	011	JAN	15 SF
GROUND LEVEL	012	KITCHENETTE	82 SF
GROUND LEVEL	013	TOILET A	56 SF
GROUND LEVEL	014	TOILET B	25 SF
GROUND LEVEL	015	STAIR A	111 SF
GROUND LEVEL			2,276 SF

ROOM AREAS			
Level	Number	Name	Area
LEVEL 1	101	STAIR B	96 SF
LEVEL 1	102	MEETING HALL	1,735 SF
LEVEL 1	103	ENTRANCE HALL	219 SF
LEVEL 1	104	OFFICE 1	147 SF
LEVEL 1	105	OFFICE 2	191 SF
LEVEL 1	106	TOILET C	45 SF
LEVEL 1	107	OFFICE 3	138 SF
LEVEL 1	108	STAIR A	130 SF
LEVEL 1			2,699 SF
MEZZANINE	201	WORK AREA	401 SF
MEZZANINE	202	TOWN OFFICES	466 SF
MEZZANINE	203	STAIR A	71 SF
MEZZANINE	204	CLOSET	21 SF
MEZZANINE			959 SF
Grand total:			5,925 SF

GROSS AREA		
Level	Name	Area
GROUND LEVEL	GROSS AREA (GL)	2,646 SF
LEVEL 1	GROSS AREA (L1)	2,902 SF
MEZZANINE	GROSS AREA (MEZZ)	2,795 SF
		8,343 SF

HINESBURG TOWN HALL

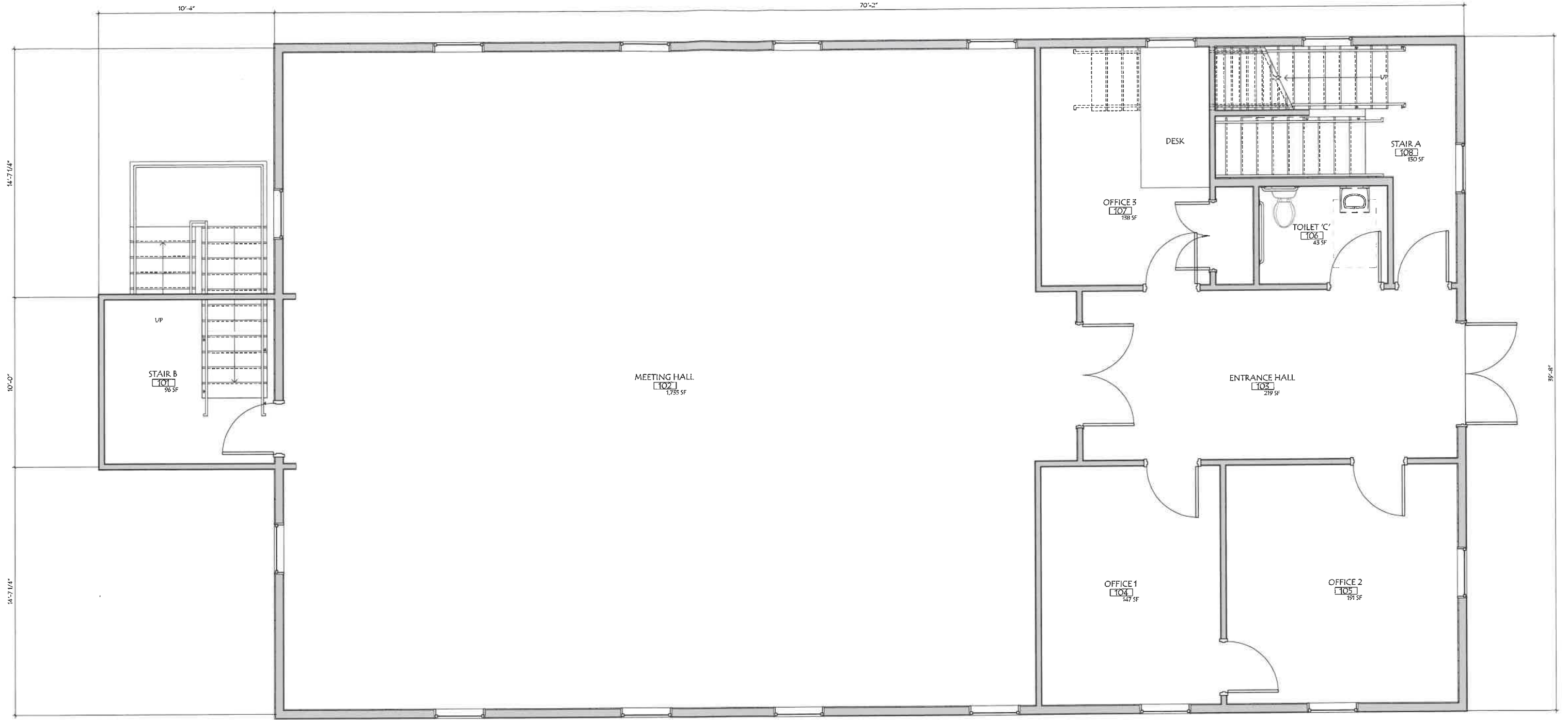
ROUTE 1A HINESBURG VERMONT

GROUND FLOOR PLAN



8/29/2022 2:25:54 PM

All reports, drawings, specifications, computer files, field data, notes and other documents and instruments prepared by the Consultant as herein referred to shall remain the property of the Consultant. The Consultant shall retain all common law, statutory and other reserved rights, including the copyright therein.



ROOM AREAS			
Level	Number	Name	Area
GROUND LEVEL	001	CORRIDOR	263 SF
GROUND LEVEL	002	CLOSET	14 SF
GROUND LEVEL	003	CONFERENCE	155 SF
GROUND LEVEL	004	LIFE PROGRAM - CONFERENCE	442 SF
GROUND LEVEL	005	PUBLIC WORK AREA	258 SF
GROUND LEVEL	006	TOWN CLERK	295 SF
GROUND LEVEL	007	VAULT	292 SF
GROUND LEVEL	008	CLOSET	11 SF
GROUND LEVEL	009	STORAGE	117 SF
GROUND LEVEL	010	MECHANICAL	181 SF
GROUND LEVEL	011	JAN	13 SF
GROUND LEVEL	012	KITCHENETTE	82 SF
GROUND LEVEL	013	TOILET A	36 SF
GROUND LEVEL	014	TOILET B	25 SF
GROUND LEVEL	015	STAIR A	111 SF
GROUND LEVEL			2,276 SF

ROOM AREAS			
Level	Number	Name	Area
LEVEL 1	101	STAIR B	96 SF
LEVEL 1	102	MEETING HALL	1,735 SF
LEVEL 1	103	ENTRANCE HALL	219 SF
LEVEL 1	104	OFFICE 1	147 SF
LEVEL 1	105	OFFICE 2	191 SF
LEVEL 1	106	TOILET 'C'	43 SF
LEVEL 1	107	OFFICE 3	138 SF
LEVEL 1	108	STAIR A	150 SF
LEVEL 1			2,699 SF
MEZZANINE	201	WORK AREA	401 SF
MEZZANINE	202	TOWN OFFICES	446 SF
MEZZANINE	203	STAIR A	71 SF
MEZZANINE	204	CLOSET	21 SF
MEZZANINE			959 SF
Grand total:	27		5,955 SF

GROSS AREA		
Level	Name	Area
GROUND LEVEL	GROSS AREA (GL)	2,646 SF
LEVEL 1	GROSS AREA (L1)	2,902 SF
MEZZANINE	GROSS AREA (MEZZ)	2,795 SF
		8,345 SF

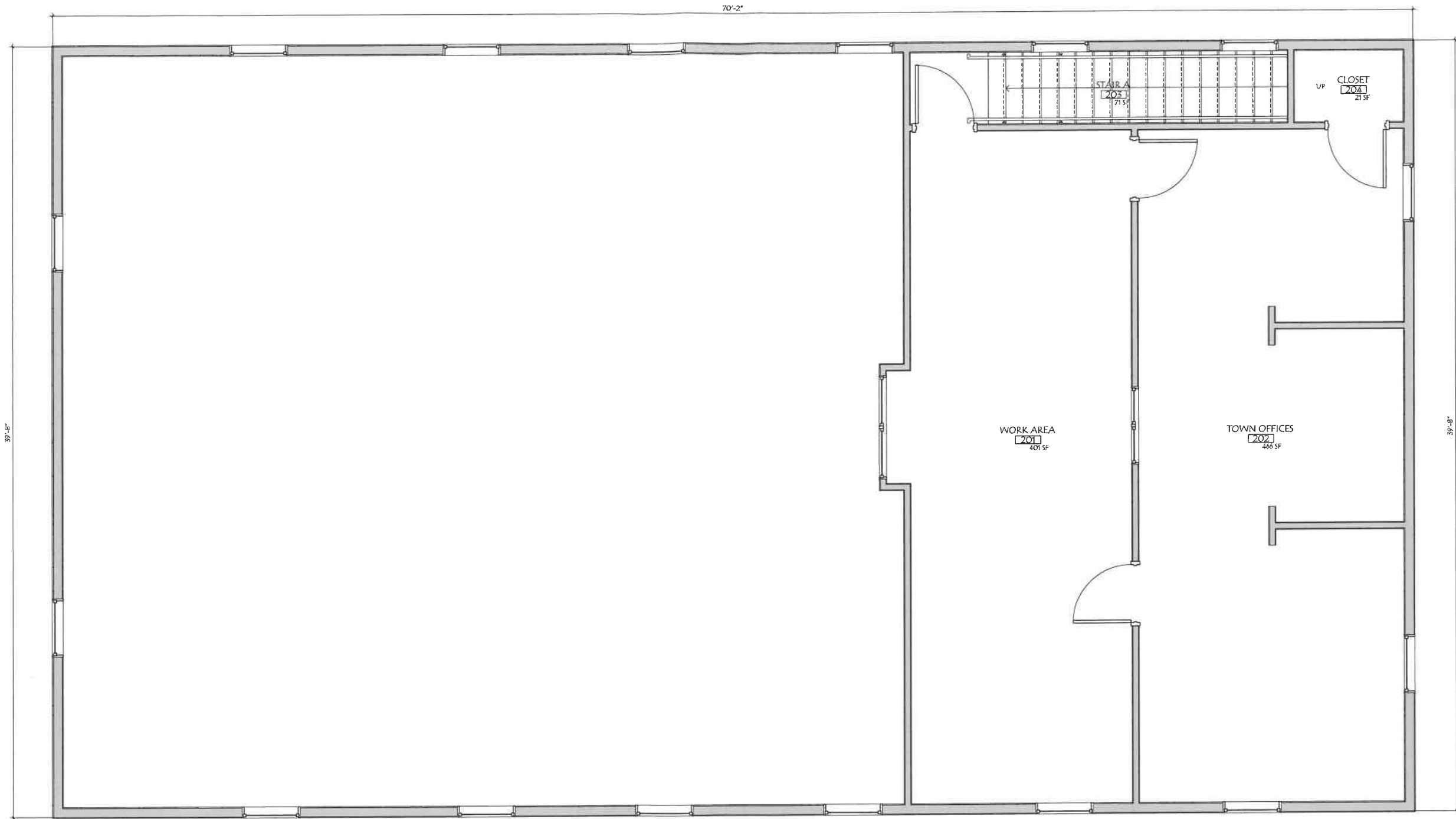
HINESBURG TOWN HALL

ROUTE 16 HINESBURG VERMONT

FIRST FLOOR PLAN



8/29/2022 2:25:54 PM



48'-5 1/2"

59'-8"

70'-2"

ROOM AREAS			
Level	Number	Name	Area
GROUND LEVEL	001	CORRIDOR	268 SF
GROUND LEVEL	002	CLOSET	14 SF
GROUND LEVEL	003	CONFERENCE	185 SF
GROUND LEVEL	004	LIFE PROGRAM - CONFERENCE	442 SF
GROUND LEVEL	005	PUBLIC WORK AREA	258 SF
GROUND LEVEL	006	TOWN CLERK	295 SF
GROUND LEVEL	007	VAULT	292 SF
GROUND LEVEL	008	CLOSET	11 SF
GROUND LEVEL	009	STORAGE	117 SF
GROUND LEVEL	010	MECHANICAL	191 SF
GROUND LEVEL	011	JAN	15 SF
GROUND LEVEL	012	KITCHENETTE	82 SF
GROUND LEVEL	013	TOILET A	56 SF
GROUND LEVEL	014	TOILET B	25 SF
GROUND LEVEL	015	STAIR A	111 SF
GROUND LEVEL			2,276 SF

ROOM AREAS			
Level	Number	Name	Area
LEVEL 1	101	STAIR B	96 SF
LEVEL 1	102	MEETING HALL	1,735 SF
LEVEL 1	103	ENTRANCE HALL	219 SF
LEVEL 1	104	OFFICE 1	147 SF
LEVEL 1	105	OFFICE 2	191 SF
LEVEL 1	106	TOILET 'C'	43 SF
LEVEL 1	107	OFFICE 3	188 SF
LEVEL 1	108	STAIR A	130 SF
LEVEL 1			2,699 SF
MEZZANINE	201	WORK AREA	401 SF
MEZZANINE	202	TOWN OFFICES	466 SF
MEZZANINE	203	STAIR A	71 SF
MEZZANINE	204	CLOSET	21 SF
MEZZANINE			959 SF
Grand total:	27		5,955 SF

GROSS AREA		
Level	Name	Area
GROUND LEVEL	GROSS AREA (GL)	2,646 SF
LEVEL 1	GROSS AREA (L1)	2,902 SF
MEZZANINE	GROSS AREA (MEZZ)	2,795 SF
		8,343 SF

All reports, drawings, specifications, computer files, field data, notes and other documents and instruments prepared by the Consultant as herein stated shall remain the property of the Consultant. The Consultant shall retain all common law, statutory and other reserved rights, including the copyright hereon.

Charles of Instruments of Service
 20222000 Vermont, 8/27/2022 2:25:55 PM
 V:\2022 PROJECTS\2022018 HINESBURG TOWN HALL & FIRE STATION\Draw Mod\42022018_823_ARCH_TH.dwg

HINESBURG TOWN HALL

ROUTE 14 HINESBURG VERMONT

MEZZANINE FLOOR PLAN



R/29/2022 2:25:55 PM

Hinesburg Fire Station				
FUNCTION		EXISTING	PROPOSED	NOTES
Apparatus Bay	Engine 1	443 SF	650 SF	pull thru apparatus bay ideal
	Engine 2	443 SF	650 SF	
	Engine 3	443 SF	650 SF	
	Tanker 1	443 SF	650 SF	
	Ladder 1	0 SF	800 SF	future 42' aerial
	Brush Truck / Pickup	0 SF	450 SF	future
	EMS Response MED 1	443 SF	500 SF	
	Ambulance 1	0 SF	500 SF	future
	Ambulance 2	0 SF	500 SF	future
	Command Vehicle	0 SF	450 SF	future SUV
	CERT Trailer	0 SF	450 SF	currently stored outside
	ATV / UTV	0 SF	300 SF	future
	Antique Truck	0 SF	500 SF	currently in storage (25')
	Support	Gear Lockers	378 SF	400 SF
Dayroom		0 SF	250 SF	
Hose/Nozzle / Tool Storage		0 SF	100 SF	
General Storage		117 SF	100 SF	
EMS Storage		76 SF	150 SF	
Equipment Maintenance		184 SF	180 SF	
Gear washer/extractor		78 SF	150 SF	
Decon Room		0 SF	100 SF	ability for 4 people to decon at same time
Toilet / shower room		49 SF	90 SF	
Toilet / shower room		0 SF	90 SF	
SCBA Fill Station		45 SF	60 SF	
Hose Dryer (or tower)		0 SF	100 SF	
Office / Admin	Dispatch	0 SF	140 SF	
	Chief	164 SF	140 SF	
	Admin Assistant	0 SF	120 SF	
	EMS	0 SF	140 SF	
	On Duty workstations	94 SF	250 SF	
	File Storage	0 SF	140 SF	
	Fitness Room	0 SF	250 SF	up to 5 people at a time
	Training / Meeting	594 SF	750 SF	50 person capacity
	Meeting room storage	38 SF	150 SF	table & chair storage
	Restrooms	0 SF	250 SF	near office/training areas
	Kitchen	80 SF	300 SF	10 person capacity - host meals for 30
	Pantry		100 SF	adjacent to kitchen
	IT closet		10 SF	
	Janitor closet		20 SF	
	Visitor Entry	49 SF	150 SF	
	EMS Bunk room	93 SF	120 SF	
	EMS Bunk room	93 SF	120 SF	
Toilet/Shower facilities	97 SF	150 SF		
Mechanical	mechanical room	40 SF	200 SF	
		4484 SF	12320 SF	
Grossing Factor		1.085	1.2	
		4865	14784	

Hinesburg Town Hall									
GROUP	DEPARTMENT	TITLE	NAME	RM#	EXG ROOM		ROOM		FTE
					SIZE	SIZE	SIZE	SIZE	
Town Hall	Town Manager	Town Manager	Todd Odit		1470	SF	200	150	1.00
Town Hall	Town Manager	Assistant Town Manager	Joy Dubin Grossman		1470	SF	150		1.00
Town Hall	Town Manager	Admin. Assistant	Future			SF	100		1.00
Town Hall	Finance	Finance Officer	Future			SF	120		1.00
Town Hall	Finance	Finance Coordinator	Joan			SF	100		0.50
Town Hall	HR	Human Resource Director				SF	100		1.00
Town Hall	Tax/Assessor	Assessor	Lisa Truchon			SF	100		1.00
Town Hall	Planning	Admin Assst	Denielle Peterson		64 SF	in	100		.4
Town Hall	Planning	Planning & Zoning Director	Alex Weinhagen		100 SF		120		1.00
Town Hall	Planning	Zoning Administrator	James Jarvis		100 SF		100		1.00
Town Hall	Planning	Work Room			400 SF		400		1.00
Town Hall	Planning	Storage			150 SF		150		1.00
Town Hall	Planning	DRB coordinator	Arich Cypes		100		100		1.00
Town Hall	Town Clerk	Town Clerk	Missy Ross		135 SF		120		1.00
Town Hall	Town Clerk	Assistant Clerk/Open Offices	Heather Roberts		295 SF		400		1.00
Town Hall	Town Clerk	Vault			292 SF		300		1.00
Town Hall	Town Clerk	Public Work Room			260 SF		400		300
Town Hall	Recreation	Recreation Coordinator	Jennifer McCuin		138 SF		120		1.00
Town Hall	Recreation	Recreation Staff	Future			SF	100		1.00
DPW	DPW	Public Works Director	Future		0		120		
DPW	Highway	Road Foreman	Michael Anthony		0		0		
DPW	Highway	Highway Dept.	Dominic Musumeci		0		0		
DPW	Highway	Sidewalk Maintainer	Ryan Gladstone		0		0		
DPW	Water / WW	Superintendent	Erik Bailey		0		0		
DPW	Water / WW	Assistant Chief Operator	John Alexander		0		0		
DPW	Water / WW	Water Resources Operator	Bart Sherman		0		0		
		Town Report Coordinator	Ann Thomas		0		0		
		Town Service Officer	Shannon Wheeler		0		0		
		Animal Control Officer / Fire Warden	Ed Waite		0		0		
		Community Resource Center	Alex Koncewicz		0		0		
		Health Officer	Phillip Stelz		0		0		
Town Hall		Total Staff							12.50
		Community Room/Meeting Hall			1735		1500		
		Large Conf Room (30 people seated)			442		700		
		Meeting Room (4-6 people)					200		
		Meeting Room (4-6 people)					200		
		LMA					60		
		LMA					60		
		wellness room / mothers room					150		
		break room/kitchen			82		300		
		mechanical / electrical			175		400		
		bathroom facilities			100		600		
		Shower Facilities					100		
		janitor room			15		30		
		storage			150		100		
		volunteer work space					150		
		secure file storage					100		
		IT room					100		
		senior center?							
		senior center kitchen							
		senior center living room							
		library?							
		bike storage (indoor/outdoor/both?)							
		net area					7700		
		grossing factor					1.5		
		gross area					11550		

common space entry?

common office

add dnd vault

HINESBURG TOWN HALL & FIRE DEPARTMENT

HINESBURG, VT



9/13/2022