

1) RUSSELL FARM PERIMETER TRAIL

A 2-mile loop around a conserved working farm located in Hinesburg's village center. Traversing both woods and fields, the hilly trail offers several vistas of the village and beyond. The perimeter trail is most suited for walking, running, and snowshoeing. Hunting permitted. The Perimeter Trail connects to the Thistle Hill Trails and to the Passing the Buck Trail.

Access: 1) Trailhead north of baseball field behind Lantman's; park at St. Jude Catholic Church. 2) Trailhead and small parking area on Buck Hill Rd. West just off Rte. 116.

2) THISTLE HILL TRAILS

Ledge, Express, and Beech Trails connect the Thistle Hill neighborhood (off Mechanicsville Rd.) to the Russell Farm Perimeter Trail. Sullivan Trail extends east from Beech Trail through the woods to Lavigne Hill Rd. Although the trails are steep in places, they are suitable for children. Several lovely bridges over streams can be found on the Sullivan Trail. Hunting permitted.



Access: 1) Park on Thistle Hill streets but NOT in the cul-de-sacs. 2) North end of Lavigne Hill Rd. but no parking here.

3) PASSING THE BUCK TRAIL

This 0.75-mile trail passes through mixed deciduous woods on private land and connects Buck Hill Rd. West with Lavigne Hill Rd. It is suitable for walking, snowshoeing, and X-C skiing. KEEP DOGS LEASHED. No hunting.

Access: 1) Buck Hill Rd. West (east of Lavigne Hill Rd. intersection). 2) Lavigne Hill Rd. (north of Buck Hill Rd. intersection). Neither trailhead has a parking area at this time. DO NOT PARK AT EITHER TRAILHEAD IN WINTER.

4) GEPRAGS PARK TRAILS

Over two miles of foot trails located less than a mile north of the Hinesburg village center. You'll find forest and field trails, a barn to offer shelter from the sun or rain, and a couple of park benches to enjoy a short rest and lovely views. Excellent birding. No hunting.

Access: Parking lot on Shelburne Falls Rd.

5) HINESBURG TOWN FOREST TRAILS

This 840-acre forest is located a few miles east (and uphill) from the village center. Thanks to the efforts of Boy Scouts and the Fellowship of the Wheel mountain biking group, there are over 17 miles of forest trails offering something for everyone – hiking, snowshoeing, mountain biking and, on a few trails, horseback riding and ATV use. The Eagle's Trail is a three-mile loop that connects to all three trailhead parking areas. For those not familiar with the trails, it is recommended to carry a detailed map (available for download on the town website). Hunting permitted.

Access: Parking lots at 1) Hayden Hill Rd., East, 2) Hayden Hill Rd. West, 3) Economou Rd.

6) NORTHEAST QUADRANT PUBLIC TRAIL

Over four miles of public trails, piggy-backed onto mountain bike trails maintained by Sleepy Hollow Inn Bike and Ski Center and Fellowship of the Wheel, are **open for public use between May 15 and October 31 only**. Perfect for walking and running, these forested trails traverse private land and include lots of switchbacks and intersections. FOLLOW THE HART BLAZES to stay on the public trail! To use the many other intersecting trails, become a member of FOTW or pay the Sleepy Hollow fee.

Access: 1) Trailhead parking lot at Sleepy Hollow Inn on Ski Lodge Drive off of Sherman Hollow Road. 2) Trailhead on Magee Hill Road just south of the intersection with Swamp Rd; parking on road. 3) Trailhead on north side of Texas Hill Rd. just west of the intersection with Hayden Hill Rd. East; parking on road.

7) LAPLATTE HEADWATERS TRAILS

This complex of Town Forest, State Fish & Wildlife land, and privately-owned land located south of the



village offers several miles of forested trails suitable for hiking, skiing, and snowshoeing. Open meadows, steep knolls, rock out-crops, and ravines provide very interesting terrain and diverse natural communities. Hunting permitted.

Access: Parking lots on 1) Gilman Rd. and 2) Lewis Creek Rd.



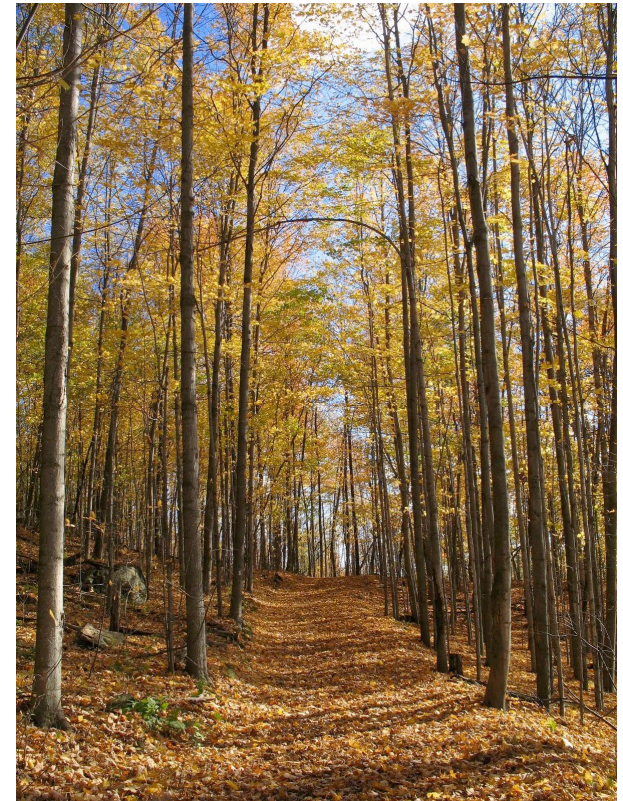
The Hinesburg Area Recreation Trails are marked with the trail blaze above.

For complete details, including trail maps, directions, and a printer-friendly copy of this brochure, visit: <http://hinesburg.org/hart.html>

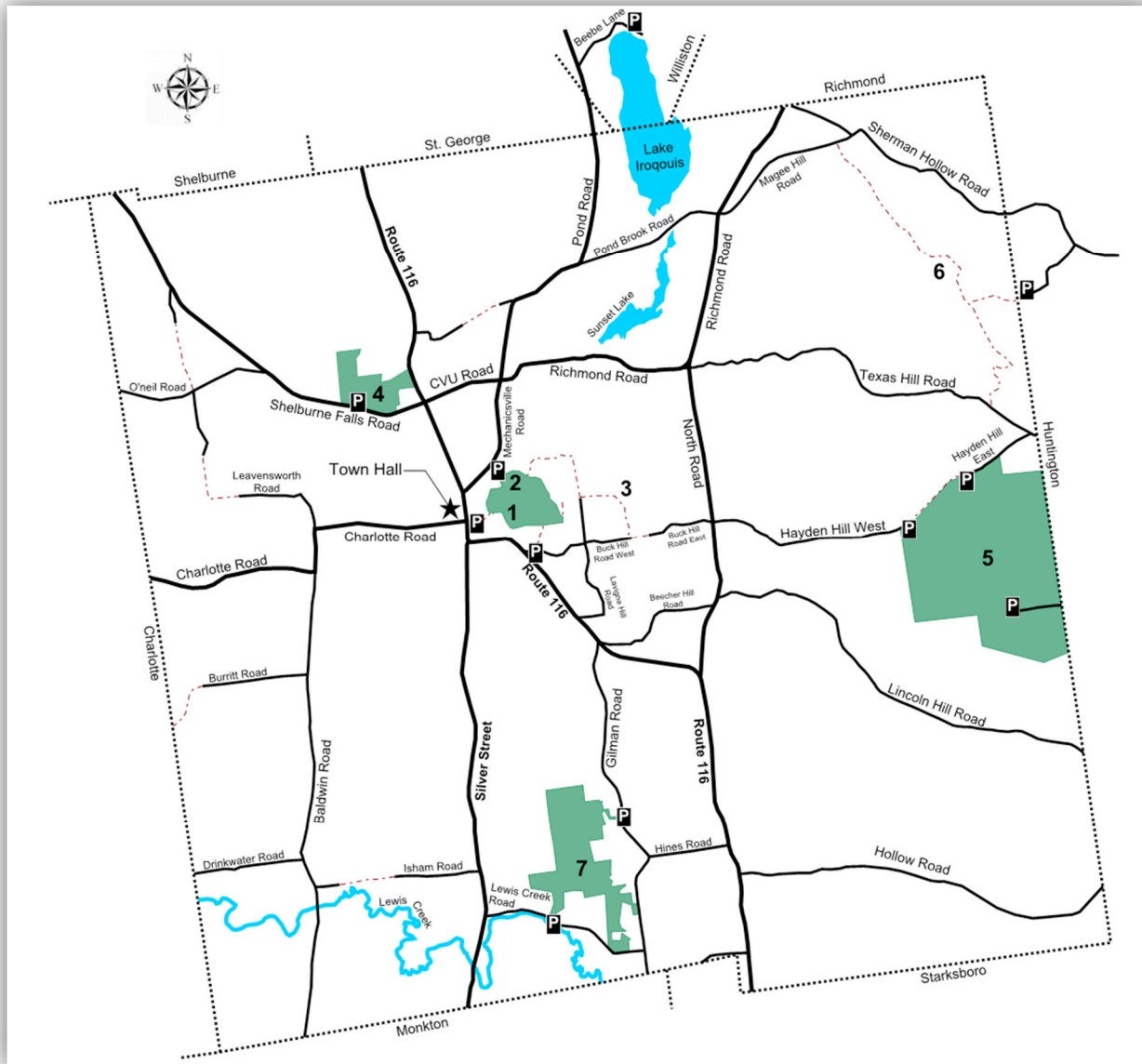
Remember; it is a privilege, rather than a right, when landowners graciously allow access to their land. Please be considerate when using trails.

Dogs on trails must be under the control of their owners. Dog waste must be removed from the trail and disposed of appropriately. Do not leave waste bags along the trail.

January 2018



ADVENTURES CLOSE TO HOME: TRAIL SUMMARY



Hinesburg Area Recreational Trails Map

See the trail descriptions and corresponding numbers on the other side of this brochure.